

# OMEGA 8.0

## DESIGN • PRINT • CUT SOFTWARE

Create graphics other design programs don't allow you to produce



For decades, leading sign and specialty graphics professionals have trusted Gerber OMEGA™ to meet their most demanding production needs. OMEGA™ delivers one of the industry's most complete suites of tools for layout, design, output, and file conversion.

From cutting vinyl to printing durable decals, placards, asset tags, and cutting stencils—plus routing dimensional signs and fabricated parts—OMEGA™ supports your entire workflow from start to finish.

### More than software.

Graphic Marking Systems pairs OMEGA™ with certified IT support and hands-on training so your team gets full value from every tool in the shop.



## NEW FEATURES IN OMEGA 8.0 DESIGN & OUTPUT SOFTWARE

### Windows 11 Compatible

OMEGA 8.0 is fully compatible with the Windows 11 operating system.

### Clip Art Toolbar

Commonly used design elements and clip art are quickly available with this new feature.

### Navigation Screen

Navigate more efficiently with a floating window that can be parked on a second monitor.

### Improved Dimension Toolbar

Display dimensions in Feet-inches format (e.g., 4' - 8") with the click of a button.

### New Effects Toolbar

A long-requested Effects toolbar saves keystrokes and gets work done faster.

### File-Open Enhancements

Larger preview images and sortable Description, Customer, and Keyword fields make finding files fast.

### Zoom 1:1

Display your artwork at true 1:1 ratio on screen with a single click.

### Export Options Templates

Save PDF (GSP65) and EPS export option sets as templates for consistent, one-click exports.

### Bitmap Fill Justification

Select image justification during the bitmap fill process for precise placement.

### Clipping Path Enhancements

Clipping paths now retain the groups of objects used to create them.

### Export/Import Keyboard & Layouts

Save, load, and share custom keyboard sets and toolbar layouts across OMEGA 8.0 workstations.

### Cut/Print Time Estimates

OMEGA Plot 8.0 estimates completion times for Gerber Edge printers and Gerber plotters.

## BEYOND THE SOFTWARE - GMS IT SUPPORT & TRAINING

Certified Gerber System Specialists keep your shop up and running and your team ahead of the learning curve - from workstation setup and network integration to one-on-one OMEGA training and on-site production coaching. See the back for full service details.

Expand Your Expertise with Targeted Learning

Contact us 800.232.8018 ■ 847.582.9276

# OMEGA 8.0 Software

Power, Precision & Performance – Plus the Support and Training Behind Every Install



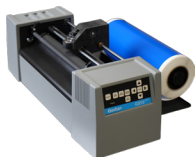
**Gerber System Specialist**  
Dana Goodale  
goodale.dana@graphicms.com



**GERBER EDGE Printers**



**GERBER enVision  
375 and 750 Plotters**



**GERBER GS, GS15 plus Plotters**



**GERBER Sabre Routers**

## KEY FEATURES:

- Optimized for vinyl cutting, printing, and specialty material workflows.
- Seamless integration with Gerber vinyl plotters, the EDGE® series of thermal transfer printers, and Gerber routers.
- Supports routing for dimensional signage, woodworking, and parts fabrication.
- Purpose-built for production environments in the sign and graphics industry.
- Imports and exports across today's most popular graphic formats and works with a wide range of third-party plotters.

## IT SUPPORT SERVICES:

Keep your shop running. Our certified Gerber system Specialists deliver responsive IT support built around sign and graphics production - so downtime stays short and print jobs stay on schedule.

- Workstation specification, setup, and on-site or remote installation.
- OMEGA 8.0 licensing, activation, migration, and Windows 11 readiness.
- Network integration for GERBER EDGE FX, plotters, routers, and shared storage.
- Hardware tuning - RAM, CPU, storage, and I/O upgrades configured to your workload.
- Remote diagnostics, troubleshooting, and preventive maintenance plans.
- Driver, adapter, and legacy-device support (USS-to-parallel, USS-to-serial).

*Whether you're configuring a new workstation or upgrading an existing one, GMS delivers complete solutions tailored to your workflow.*

## INSTRUCTIONAL SERVICES & TRAINING

Expand Your Expertise with Targeted Learning. Our instructors help your team turn OMEGA 8.0 features into real production efficiency - from first-time users to seasoned operators looking to sharpen advanced skills.

- One-on-one, small-group, and team training delivered on-site, remote, or hybrid.
- Beginner through advanced OMEGA curricula - design, print, cut, and output workflows.
- Equipment-specific instruction for EDGE printing, vinyl cutting, and Sabre router operation.
- Color management, print optimization, and finishing best practices.
- Custom curricula built around your equipment, materials, and production goals.
- Onboarding programs for new hires and refresher sessions for experienced staff.

*Every training engagement is designed to pay for itself in faster production, cleaner output, and fewer costly reruns.*

## SYSTEM REQUIREMENTS

Minimum processor and RAM requirements are dictated by your operating system. These are minimums only - a multicore CPU and at least 4 GB of RAM are recommended for optimal performance.

- Windows® 11 (32 or 64 bit).
- AutoCarve™ 3D requires 32 bit OS (not 64).
- 100+ GB available disk space.
- 1024 x 768+ monitor resolution with 16 million colors.
- Two or more available USB ports recommended.
- Ethernet port for GERBER EDGE® FX and other network connections.
- EDGE I or EDGE II require a Gerber USB to Parallel Adapter Cable (P83301A) - modern Windows no longer supports parallel ports.
- Serial ports (9-pin) for Gerber plotters and/or routers. Optional GSP USS-to-serial adapter (P83305A) available.

## OMEGA 8.0 ALSO SUPPORTS:

GERBER EDGE Printers • Gerber envision Plotters • Gerber GS Series Plotters • Gerber Sabre Routers - plus a wide range of third-party devices and industry file formats.

### Have questions about software, support, or training?

Contact Dana Goodale at [goodale.dana@graphicms.com](mailto:goodale.dana@graphicms.com) or call 800.232.8018.



**Expand Your Expertise with Targeted Learning**  
Contact us for IT Support & Training

847.582.9276 ■ 800.232.8018  
[www.shopGMS.com](http://www.shopGMS.com)