



# Gerber After Market Product Guide

For Print Shops & Graphic Professionals

Providing high quality printing materials for:

- > Print Industry    > Sign Industry
- > Government    > In-Plant

[www.ShopGMS.com](http://www.ShopGMS.com) • [www.GerberPrinters.com](http://www.GerberPrinters.com)  
1-800-232-8018 • [info@graphicms.com](mailto:info@graphicms.com)

***Work Smarter With GMS***







## PROVIDING QUALITY PRINT MATERIALS SINCE 1994

### ABOUT GRAPHIC MARKING SYSTEMS

#### Our Focus:

We focus on the needs of companies and people who provide label and decal printing services to the marketplace. Whether they are an in-house department or a store front, we focus on software, printing and cutting equipment and finishing systems for the "On Demand" short-run marketplace.

#### Our History:

We incorporated in 1994. The staff of Graphic Marking Systems has over 60 years of combined experience in the graphics industry. Our worldwide clientele includes everything from small one-person and part-time businesses, to large blue-chip corporations.

#### Our Purpose:

We begin by consulting with you about your needs. Then we recommend, tailor and implement production solutions that solve your problems and help take your business to the next level.

#### Connect With Us:

www.ShopGMS.com  
www.ConvexVinyl.com  
www.GerberPrinters.com

### OUR SERVICE



#### Unparalleled Support

At GMS we want our clients to succeed! Our staff is ready to assist with all of your questions, concerns or sale orders!



#### Ease of Purchase

We provide a user friendly website—[www.ShopGMS.com](http://www.ShopGMS.com)—for your 24/7 convenience. You may also call, email or fax your order to us.



#### Intuitive Training

GMS supplies our clients with workflow technology to support their diverse project portfolio. We train and educate your team to become proficient with the equipment and software.



#### Innovative Products

We provide quality materials to our clients that can't be found anywhere else. At GMS we are constantly improving old and developing new products to enable you and your staff.

# Gerber After-Market Price List

## For Print Shops and Graphic Professionals

- EDGE® FOILS
- Vinyl Films
- EDGE READY™ Materials
- Application Tapes
- EDGE and Plotter Accessories
- Router Bits
- Router Accessories
- Wide Format Materials and Inks
- Small Format Materials

### Effective February 18, 2019

Last updated January 17, 2019. All information is subject to change or correction.

Product Bulletins for most materials are available. Please call us at 800.232.8018 to receive a copy.

Use this guide together with the World of Color Sales tool. All prices USD.

VISIT our website [ShopGMS.com](http://ShopGMS.com) for quality foils, films and accessories!



Call us at 800.232.8018 to order our Routing and Engraving Bits.

GMS ships the **SAME DAY** on **HOT ORDERS** placed by 5 pm CT

# Gerber **Aftermarkets Products** - Index

## **GerberColor™ Foils**

Spot Color Foils .....	Page 3
Process Pro™ Foils .....	Page 4
Transparent Foils .....	Page 4
Medal Foils .....	Page 5
Spectra Foils .....	Page 5
Finishing Foils .....	Page 5
Special Effects Foils .....	Page 6
ColorSet™ Intermediate Foils .....	Page 6
EDGE FX Caddies and Conversion Kit .....	Page 6

## **Gerber Films**

Gerber 220 - EDGE READY .....	Page 7
Gerber 220 - 30" Unpunched .....	Page 9
Gerber 220 Metallic - EDGE READY .....	Page 8
Gerber 225 - EDGE READY .....	Page 10
Gerber 225 Metallic - EDGE READY .....	Page 10
Gerber 230 Translucent - EDGE READY .....	Page 11
Gerber 280 and 280i Plus Reflective - EDGE READY .....	Page 12
Gerber 210 Dusted and Frosted Crystal .....	Page 12
Gerber 210 Fluorescent Film - EDGE READY .....	Page 12
Gerber 220 Easy Apply Film - EDGE READY .....	Page 13
Gerber QUANTUM™ II Marking Films - Intermediate Series - EDGE READY .....	Page 13
Gerber QUANTUM 2000 Marking Films - Intermediate Series - EDGE READY .....	Page 13

Gerber InstaChange™ - EDGE READY .....	Page 13	PVC-10 - EDGE READY .....	Page 19
Static Cling Film - EDGE READY .....	Page 14	Metallized Polyesters - EDGE READY .....	Page 19
Gerber ImageCal™ R - EDGE READY .....	Page 14	Gerber Heat Transfer - EDGE READY .....	Page 19
GerberVision™ II - EDGE READY .....	Page 14	Magnetics - EDGE READY .....	Page 20
GerberGlow™ - EDGE READY .....	Page 14	Overlaminates .....	Page 20
Gerber Luminous Film - EDGE READY .....	Page 15	Edge Positive™ - EDGE READY .....	Page 21
Gerber HoloGraphix™ - EDGE READY .....	Page 15	Screenprint Films .....	Page 21
Gerber ImageCal P - EDGE READY .....	Page 15	Masking Material .....	Page 22
Gerber ImageCast™ - EDGE READY .....	Page 15	Paper .....	Page 23
Gerber PermaGrip™ - EDGE READY .....	Page 16	Sandblast Material .....	Page 23
Label Stock - EDGE READY .....	Page 16	Application Tapes and Surface Cleaner .....	Page 23
LexEdge™ - EDGE READY .....	Page 18	3M™ Adhesive Tape 467MP & 468MP .....	Page 23

ImagePerfect Digital Material from Gerber Technology .....	Page 24
--	---------

## **Gerber Accessories**

Gerber Material Handling Systems .....	Page 27
--	---------

GERBER EDGE® Accessories .....	Page 28	Gerber GSx Plotter Accessories .....	Page 29
Gerber enVision Plotter Accessories .....	Page 28	Gerber Monument Plotter Accessories .....	Page 29
Gerber GS and HS Plotter Accessories .....	Page 28	Gerber Legacy Plotter Accessories .....	Page 30

Gerber Routing Bits .....	Page 32
Router Accessories and Materials .....	Page 38
7 ½" Format Materials .....	Page 40

# GerberColor™ Spot Color Foils

Custom-formulated, resin-based, semi-gloss spot color foils will provide three- to five-year exterior life performance. Use with GerberColor Spectratone™ to produce additional colors. Warranted as specified when used on Gerber-approved EDGE READY materials.

[Spot Color Foil Product Bulletin](#)

EDGE 1 & 2		Spot Color Foils		EDGE FX™			
45 Meter	75 Meter	Color, Pigment Code		15 Meter	45 Meter	75 Meter	91 Meter
\$120.23	\$180.42			\$49.67	\$108.77	\$173.05	\$198.30
P49085A	P79100A	Black	GCS-12		P77684A		P77685A
P49084A	P79101A	White	GCS-10		P77788A	P84891A	
P66276A		Apple Green	GCS-196		P77679A		
P53542A		Aqua	GCS-176	P77680A			
P82885A		Arctic White	GCS-710		P81285A		
P76550A		Atomic Red	GCS-293	P78957A	P77682A		
P53512A		Beige	GCS-49		P77683A		
P60367A		Brick Red	GCS-603	P77687A			
P49087A		Brown	GCS-19		P77689A		
P53487A		Burgundy	GCS-58		P77690A		
P49093A		Cobalt Blue	GCS-37		P77693A		P77801A
P80134A		Dark Cardinal Red	GCS-353		P84731A		
P66256A		Dark Gray	GCS-641		P77697A		
P66260A		Dark Green	GCS-56		P77696A		
P84874A		Deep Sea Blue	GCS-515		P84875A		
P83442A		Electric Green	GCS-406		P83441A		
P84876A		Fern Green	GCS-286		P84877A		
P83443A		Fireball Red	GCS-493		P83440A		P80519A
P53492A		Forest Green	GCS-66		P77699A		
P49086A		Gray	GCS-31		P77704A		
P49095A		Green	GCS-186		P77702A		P77703A
P53497A		Intense Blue	GCS-47		P77707A		P77708A
P66268A		Intense Red	GCS-663		P77709A		P77710A
P60362A		Kelly Green	GCS-46		P77712A		
P53532A		Kumquat	GCS-74		P77714A		
P53537A		Lemon Yellow	GCS-155		P77715A		
P66252A		Light Gray	GCS-681		P77716A		
P76588A		Light Navy	GCS-697	P78958A	P77717A		
P53517A		Light Purple	GCS-668		P77719A		
P69936A		Lime Green	GCS-616	P77720A	P77721A		
P60382A		Navy	GCS-627		P77732A		P80679A
P49094A		Olympic Blue	GCS-57		P77733A		P77734A
P49089A		Orange	GCS-14		P77735A		P80678A
P53527A		Peacock Blue	GCS-77		P77736A		
P53522A		Pink	GCS-643	P77737A			
P49092A		Purple	GCS-38		P77748A		
P60377A		Raspberry	GCS-133	P77749A			
GCS687		Royal Reflex	GCS-687		P77752A		
P49091A		Ruby Red	GCS-53		P77753A		P77754A
P84878A		Seafoam	GCS-386		P84879A		
P53502A		Sunflower Yellow	GCS-625		P77757A		
P60372A		Tan	GCS-39	P77758A			
P53507A		Teal	GCS-96		P77760A		
P66264A		Terra Cotta	GCS-24	P77761A			
P49090A		Tomato Red	GCS-13		P77763A		P77764A
P78908A		Traffic Gray	GCS-151	P78905A			
P84742A		University Blue	GCS-267		P84741A		
P84754A		Vegas Gold	GCS-145		P84753A		
P69932A		Violet Purple	GCS-628	P77786A	P77787A		
P78904A		Vivid Blue	GCS-017	P78901A			
P49088A		Yellow	GCS-15		P77789A		P77790A



February 18, 2019  
Page 3



## GerberColor **Spot Color Foils** – continued

EDGE 1 & 2			Spot Metallic Foils	EDGE FX		
25 Meter	45 Meter \$221.37	75 Meter	Color, Pigment Code	15 Meter \$90.13	45 Meter \$214.46	91 Meter
	P66284A		Champagne Gold GCS-601	P77691A		
	P66280A		Copper GCS-629	P77694A		
	P60392A		Gold GCS-631		P77700A	
	P60387A		Silver GCS-620		P77755A	
	P66272A		Imitation Gold GCS-105	P77705A	P77706A	

## GerberColor **Process Pro – CMYK Foils**

Custom-formulated, resin-based, semi-gloss foils for four-color process prints, process color simulations of solid PANTONE® colors, EDGE Match™, and photographic bitmap reproductions. Three-year exterior life performance. Use with GerberColor Spectratone to produce additional colors. Warranted as specified when used on Gerber-approved EDGE READY materials.

[Process Pro CMYK Foil Product Bulletin](#)

EDGE 1 & 2			Process Color Foils	EDGE FX		
25 Meter	45 Meter \$120.23	75 Meter	Color, Pigment Code	15 Meter	45 Meter \$108.77	91 Meter \$198.30
	P76283A		Process Black GCP-812		P77740A	P77741A
	P76282A		Process Cyan GCP-807		P77742A	P77743A
	P76281A		Process Magenta GCP-873		P77744A	P77745A
	P76280A		Process Yellow GCP-805		P77746A	P77747A

## GerberColor **Transparent Foils**

Custom-formulated, resin-based, transparent color foils will provide three-year exterior life performance. The unique transparent feature allows the characteristics of the base EDGE READY material to come through. GCT foils should be double-hit for best backlit results. Use with GerberColor Spectratone to produce additional colors. Warranted as specified when used on Gerber approved EDGE READY materials.

[Transparent Foil Product Bulletin](#)

EDGE 1 & 2			Transparent Foils	EDGE FX		
25 Meter	45 Meter \$139.20	75 Meter	Color, Pigment Code	15 Meter	45 Meter \$130.46	91 Meter
	P60397A		Blue GCT-617		P77765A	
	P60447A		Brown GCT-629		P77767A	
	P60437A		Burgundy GCT-49		P77769A	
	P60442A		Gold GCT-105		P77771A	
	P60452A		Green GCT-116		P77773A	
	P60402A		Orange GCT-614		P77775A	
	P79105A		White/SpectraTint GCX-030		P79107A	
	P60432A		Plum Purple GCT-128		P77777A	
	P60407A		Red GCT-643		P77779A	
	P60427A		Sapphire Blue GCT-37		P77781A	
	P60422A		Tomato Red GCT-13		P77783A	
	P60417A		Yellow GCT-625		P77785A	
	P79102A		Gray/SpectraShade GCX-111		P79104A	



February 18, 2019  
Page 4

## GerberColor Medal Foils

As the “medal” name implies, GCM foils produce images which have an elegant, polished metal finish. NOTE: Interior use only.

[Medal Foil Product Bulletin](#)

EDGE 1 & 2			Medal Foil	EDGE FX		
25 Meter \$216.37	45 Meter	75 Meter	Color, Pigment Code	25 METER \$209.66	45 Meter	91 Meter
P83515A			Silver Medal II GCM-721	P84733A		
EDGE 1 & 2			Medal Foils	EDGE FX		
25 Meter \$196.70	45 Meter	75 Meter	Color, Pigment Code	15 Meter \$136.13	45 Meter	91 Meter
GCM747			Blue Medal GCM-747			
GCM783			Red Medal GCM-783			
P49096A			Gold Medal GCM-731	P77701A		

## GerberColor SpectraTint™ and SpectraShade™ Foils

GerberColor Spectra foils are designed for overprinting to modify the appearance of base color foils. Use these foils to produce a wider range of EDGE-printed spot colors, to better match hard-to-hit corporate identity program colors or to create special shading effects on shapes and large text. All effects are achieved with solid fill printing.

**SpectraTint** has been designed to lighten the appearance of the base color, while **SpectraShade** will darken it. Both foils have been formulated for outdoor use for up to three years. Spectra foils can triple the range of spot colors that are printable with a shop's current inventory of foils.

[Transparent Spectra- Foil Product Bulletin](#)

EDGE 1 & 2			Spectra Foils	EDGE FX		
25 Meter	45 Meter \$139.20	75 Meter	Color, Pigment Code	15 Meter	45 Meter \$130.46	91 Meter
	P79105A		SpectraTint GCX-030		P79107A	
	P79102A		SpectraShade GCX-111		P79104A	

## GerberColor Finishing Foils

Abrasion Guard™ SPF is designed for graphics likely to experience repeated handling or frequent contact. This clear overprint GerberColor foil makes GERBER EDGE-produced graphics considerably more resistant to abrasion, **plus it adds up to 30% longer UV protection to any EDGE output!**

[Finishing Foil Product Bulletin](#)

EDGE 1 & 2			Finishing Foils	EDGE FX		
25 Meter	45 Meter	75 Meter \$180.42	Color	15 Meter	45 Meter	91 Meter \$198.30
		P81988A	Abrasion Guard SPF			P81878A



February 18, 2019  
Page 5

## GerberColor Special Effects Foils

GerberColor Special Effects (GCX) Series Foils are specifically designed to produce dramatic and eye-catching graphics. NOTE: Interior use only, except for Metal Flake which has a 6-month outdoor life, or 2-year outdoor life when laminated with Gerber UVGuard.

[Flood Coat White Foil Product Bulletin](#)

[Jet Black Foil Product Bulletin](#)

[Fluorescent Foil Product Bulletin](#)

[Metal Flake Foil Product Bulletin](#)

EDGE 1 & 2			Special Effects Foils	EDGE FX		
25 Meter \$91.88	45 Meter	75 Meter	Color, Pigment Code	15 Meter	45 Meter \$137.43	91 Meter
P69940A			Fluorescent Red Orange GCX-414		P83353A	
EDGE 1 & 2			Special Effects Foils	EDGE FX		
25 Meter	45 Meter \$135.03	75 Meter	Color, Pigment Code	15 Meter	45 Meter \$121.21	91 Meter
	P76453A		Flood Coat White GCX-010		P77698A	
	GCX12		Jet Black GCX-12		P77711A	
EDGE 1 & 2			Special Effects Foils	EDGE FX		
25 Meter	45 Meter \$195.77	75 Meter	Color	15 Meter	45 Meter \$176.30	91 Meter
	P84367A		Metal Flake GCX-715		P84366A	

## GerberColor ColorSet Intermediate Foils

EDGE 1 & 2			ColorSet Foils
25 Meter	50 Meter \$107.63	75 Meter	Color, Pigment Code
	P67112A		Process Black CSP-12
	P67124A		Process Cyan CSP-607
	P67116A		Process Magenta CSP-273
	P67120A		Process Yellow CSP-605
EDGE 1 & 2			ColorSet Foils
25 Meter	45 Meter \$94.16	75 Meter	Color, Pigment Code
	P69593A		Black CSS-12
	P67691A		Cobalt Blue CSS-37
	P67699A		Warm Red CSS-253

Gerber ColorSet process and spot foils have been designed to provide a solution for short-term graphic needs. User should determine suitability of all applications before using ColorSet foils.

[ColorSet Foil Product Bulletin](#)

## EDGE FX Foil Caddies

EDGE FX Caddy	Single	\$27.50	P80095D
	18 Pack	\$471.19	P80096A

## GC Foil to FX Foil Conversion Kit

GC to FX Foil Conversion Plug Set	\$38.95
	P84334A



February 18, 2019  
Page 6



# Gerber 220 High Performance Film manufactured by 3M

Gerber 220 is a high performance 2 mil cast vinyl, optimal for GERBER EDGE-printing, cutting, weeding, and application. Its clear pressure-sensitive adhesive allows production of attractive two-way markings. Excellent durability with five to eight-year exterior life.

[Gerber 220 Product Bulletin](#)

15" Punched EDGE READY		30" Punched		220 High Performance	24" Unpunched		48" Unpunched	
10 Yard \$59.80	50 Yard \$225.98	10 Yard \$112.15	50 Yard \$451.94	Color, Color Code	10 Yard \$74.79	50 Yard \$356.12	10 Yard \$149.57	50 Yard \$712.25
P20855C	P20856C	P21918C	P20962C	Black 220-12	P83594A	P83595A	P83597A	P83598A
P20871C	P20872C	P21916C	P20960C	Matte Black 220-22	P83720A	P83721A	P83723A	P83724A
P83229A	P83230A	P83237A	P83238A	Matte White 220-20	P83233A	P83234A	P83241A	P83242A
P83247A	P83248A	P83255A	P83256A	White 220-10	P83251A	P83252A	P83259A	P83260A
15" Punched EDGE READY		30" Punched		220 High Performance	24" Unpunched		48" Unpunched	
10 Yard \$66.44	50 Yard \$257.33	10 Yard \$127.92	50 Yard \$514.65	Color, Color Code	10 Yard \$85.17	50 Yard \$405.52	10 Yard \$170.30	50 Yard \$810.95
P53024A	P53044A	P53064A	P53084A	Antique White 220-90	P83565A	P83566A	P83569A	P83570A
P53022A	P53042A	P53062A	P53082A	Oyster 220-100	P83785A	P83786A	P83789A	P83790A
P20869C	P20870C	P21930C	P20974C	Pearl Gray 220-11	P83793A	P83794A	P83797A	P83798A
P84517A	P84518A	P84584A	P84585A	Light Gray 220-121				
P84521A	P84522A	P84588A	P84589A	Stone Gray 220-81				
P27325A	P27326A	P27363A	P27364A	Medium Gray 220-31	P83726A	P83727A	P83729A	P83730A
P84525A	P84526A	P84592A	P84593A	Mid Gray 220-61				
P53036A	P53056A	P53076A	P53096A	Traffic Gray 220-151	P83861A	P83862A	P83865A	P83866A
P84529A	P84530A	P84596A	P84597A	Dove Gray 220-91				
P27327A	P27328A	P27365A	P27366A	Dark Gray 220-41	P83660A	P83661A	P83663A	P83664A
P53035A	P53055A	P53075A	P53095A	Nimbus Gray 220-101				
P57480A	P57495A	P57510A	P57525A	Duranodic 220-69	P83667A	P83668A	P83671A	P83672A
P20851C	P20852C	P21925C	P20969C	Deep Mahogany Brown 220-19	P83889A	P83890A	P83893A	P83894A
P27491A	P27492A	P27493A	P27494A	Russet Brown 220-29	P83903A	P83904A	P83907A	P83908A
P27331A	P27332A	P27369A	P27370A	Sandstone 220-89				
P20883C	P20884C	P21926C	P20970C	Tan 220-39				
P20885C	P20886C	P21914C	P20958C	Beige 220-49	P83911A	P83912A	P83915A	P83916A
P27333A	P27334A	P27371A	P27372A	Fawn 220-99				
P84541A	P84542A	P84608A	P84609A	Light Lemon Yellow 220-65				
P57477A	P57492A	P57507A	P57522A	Primrose Yellow 220-135	P83815A	P83816A	P83819A	P83820A
P20861C	P20862C	P21921C	P20965C	Bright Yellow 220-15	P83614A	P83615A	P83617A	P83618A
P27495A	P27496A	P27497A	P27498A	Sunflower 220-25	P83842A	P83843A	P83845A	P83846A
P57478A	P57493A	P57508A	P57523A	Chrome Yellow 220-145				
P27337A	P27338A	P27375A	P27376A	Imitation Gold 220-105	P83687A	P83688A	P83691A	P83692A
P27339A	P27340A	P27377A	P27378A	Apricot 220-64				
P27499A	P27500A	P27501A	P27502A	Light Orange 220-54				
P20863C	P20864C	P21923C	P20967C	Bright Orange 220-14	P83608A	P83609A	P83611A	P83612A
P53026A	P53046A	P53066A	P53086A	Intense Orange 220-134	P83701A	P83702A	P83705A	P83706A
P84537A	P84538A	P84604A	P84605A	Red Orange 220-74				
P27341A	P27342A	P27379A	P27380A	Terra Cotta 220-24				
P27343A	P27344A	P27381A	P27382A	Magenta 220-103				
P53034A	P53054A	P53074A	P53094A	Process Magenta 220-273				
P53027A	P53047A	P53067A	P53087A	Warm Red 220-253	P83875A	P83876A	P83879A	P83880A
P53025A	P53045A	P53065A	P53085A	Perfect Match Red 220-263	P83800A	P83801A	P83803A	P83804A
P57468A	P57483A	P57498A	P57513A	Atomic Red 220-293	P83580A	P83581A	P83583A	P83584A
P20865C	P20866C	P21917C	P20961C	Tomato Red 220-13	P83854A	P83855A	P83857A	P83858A



February 18, 2019

Page 7

# Gerber **220 High Performance** Film – Continued

15" Punched EDGE READY		30" Punched		220 High Performance	24" Unpunched		48" Unpunched	
10 Yard \$66.44	50 Yard \$257.33	10 Yard \$127.92	50 Yard \$514.65	Color, Color Code	10 Yard \$85.17	50 Yard \$405.52	10 Yard \$170.30	50 Yard \$810.95
P84533A	P84534A	P84600A	P84601A	Imperial Red 220-93				
P27503A	P27504A	P27505A	P27506A	Geranium 220-63	P83680A	P83681A	P83683A	P83684A
P20881C	P20882C	P21920C	P20964C	Cardinal Red 220-53	P83628A	P83629A	P83631A	P83632A
P53038A	P53058A	P53078A	P53098A	Cranberry 220-283				
P21032C	P21033C	P22304C	P22305C	Burgundy 220-58	P83882A	P83883A	P83885A	P83886A
P57471A	P57486A	P57501A	P57516A	Dark Burgundy 220-68	P83647A	P83648A	P83651A	P83652A
P35326A	P35327A	P35348A	P35349A	Dark Violet 220-98				
P84568A	P84569A	P84636A	P84637A	Plum 220-78				
P27347A	P27348A	P27385A	P27386A	Royal Purple 220-38	P83830A	P83831A	P83833A	P83834A
P27349A	P27350A	P27387A	P27388A	Purple 220-48				
P57479A	P57494A	P57509A	P57524A	Royal Blue 220-87	P83823A	P83824A	P83827A	P83828A
P21036C	P21037C	P22334C	P22335C	Navy 220-27	P83777A	P83778A	P83781A	P83782A
P35328A	P35329A	P35350A	P35351A	Light Navy 220-197	P83714A	P83715A	P83717A	P83718A
P84564A	P84565A	P84632A	P84633A	Boat Blue 220-127				
P57475A	P57490A	P57505A	P57520A	Dark Blue 220-397	P83640A	P83641A	P83643A	P83644A
P35330A	P35331A	P35352A	P35353A	Shadow Blue 220-177				
P35332A	P35333A	P35354A	P35355A	Wedgwood Blue 220-187				
P20873C	P20874C	P21928C	P20972C	Sapphire Blue 220-37	P83836A	P83837A	P83839A	P83840A
P20875C	P20876C	P21913C	P20957C	Vivid Blue 220-17	P83868A	P83869A	P83871A	P83872A
P57482A	P57497A	P57512A	P57527A	Matte Blue 220-407				
P20857C	P20858C	P21922C	P20966C	Intense Blue 220-47	P83694A	P83695A	P83697A	P83698A
P57473A	P57488A	P57503A	P57518A	Periwinkle 220-387	P83807A	P83808A	P83811A	P83812A
P84560A	P84561A	P84628A	P84629A	Persian Blue 220-117				
P20877C	P20878C	P21929C	P20973C	Olympic Blue 220-57	P83896A	P83897A	P83899A	P83900A
P84556A	P84557A	P84624A	P84625A	Light Blue 220-107				
P84552A	P84553A	P84620A	P84621A	Soft Blue 220-97				
P21034C	P21035C	P22332C	P22333C	Peacock Blue 220-77				
P27351A	P27352A	P27389A	P27390A	Robin Egg Blue 220-86				
P53033A	P53053A	P53073A	P53093A	Powder Blue 220-347				
P35336A	P35337A	P35358A	P35359A	Dark Aqua 220-307				
P27353A	P27354A	P27391A	P27392A	Teal 220-96	P83848A	P83849A	P83851A	P83852A
P53032A	P53052A	P53072A	P53092A	Bermuda Blue 220-357	P83587A	P83588A	P83591A	P83592A
P84544A	P84545A	P84612A	P84613A	Lime Green 220-136				
P35338A	P35339A	P35360A	P35361A	Apple Green 220-196	P83573A	P83574A	P83577A	P83578A
P20859C	P20860C	P21924C	P20968C	Kelly Green 220-46	P83708A	P83709A	P83711A	P83712A
P35340A	P35341A	P35362A	P35363A	Bright Green 220-186	P83918A	P83919A	P83921A	P83922A
P57469A	P57484A	P57499A	P57514A	Cactus Green 220-266	P83621A	P83622A	P83625A	P83626A
P20879C	P20880C	P21927C	P20971C	Dark Green 220-56	P83654A	P83655A	P83657A	P83658A
P84548A	P84549A	P84616A	P84617A	Khaki Green 220-16				
P27355A	P27356A	P27393A	P27394A	Forest Green 220-66	P83674A	P83675A	P83677A	P83678A
P53039A	P53059A	P53079A	P53099A	Bottle Green 220-276	P83601A	P83602A	P83605A	P83606A
P27323A	P27324A	P27361A	P27362A	Clear Enamel Receptive 220-114	P83634A	P83635A	P83637A	P83638A



February 18, 2019  
Page 8

## Gerber 220 High Performance Film – Continued

220 High Performance		30" <u>Unpunched</u>	
Color, Color Code		10 Yard	50 Yard \$440.92
Black	220-12		P58445A
Matte Black	220-22		P58444A
Matte White	220-20		P84898A
White	220-10		P84899A
Color, Color Code		10 Yard	50 Yard \$514.65
Medium Gray	220-31		P58440A
Dark Gray	220-41		P58442A
Tomato Red	220-13		P58474A
Cardinal Red	220-53		P58476A
Light Navy	220-197		P58489A
Sapphire Blue	220-37		P58493A
Vivid Blue	220-17		P58494A
Gold Metallic	220-131		P58531A
Silver Metallic	220-120		P58532A

## Gerber 220 Metallic High Performance Film manufactured by 3M

Gerber 220 metallic is a high performance 2 mil cast vinyl with the visual addition of a metallic sparkle, perfect for use on cars, trucks, boats, RVs, and signs or markings. Excellent durability with five-year unprinted exterior life.

***New colors are highlighted in green.***

[Gerber 220 Product Bulletin](#)

15" Punched EDGE READY		30" Punched		220 Metallic HP	24" Unpunched		48" Unpunched	
10 Yard \$66.44	50 Yard \$257.33	10 Yard \$127.92	50 Yard \$514.65	Color, Color Code	10 Yard \$85.17	50 Yard \$405.52	10 Yard \$170.30	50 Yard \$810.95
P27357A	P27358A	P27395A	P27396A	Gold Metallic 220-131	P83748A	P83749A	P83751A	P83752A
P27359A	P27360A	P27397A	P27398A	Silver Metallic 220-120	P83762A	P83763A	P83765A	P83766A
15" Punched EDGE READY		30" Punched		220 Metallic HP	24" Unpunched		48" Unpunched	
10 Yard \$94.03	50 Yard \$390.35	10 Yard \$185.54	50 Yard \$780.69	Color, Color Code	10 Yard \$131.15	50 Yard \$624.55	10 Yard \$262.32	50 Yard \$1249.13
P31828A	P31829A	P31873A	P31874A	Dark Blue Metallic 220-217	P83741A	P83742A	P83745A	P83746A
P31831A	P31832A	P31876A	P31877A	Bright Blue Metallic 220-227				
P84572A	P84573A	P84640A	P84641A	Petroleum Blue Metallic 220-247				
				Silver Blue Metallic 220-237	P83769A	P83770A	P83773A	P83774A
P31801A	P31802A	P31846A	P31847A	Charcoal Metallic 220-211				
P31837A	P31838A	P31882A	P31883A	Slate Metallic 220-201				
P84580A	P84581A	P84648A	P84649A	Steampunk Red Metallic 220-243				
P31819A	P31820A	P31864A	P31865A	Burgundy Metallic 220-208				
P31804A	P31805A	P31849A	P31850A	Dark Brown Metallic 220-209				
P31810A	P31811A	P31855A	P31856A	Copper Metallic 220-229	P83733A	P83734A	P83737A	P83738A
P84576A	P84577A	P84644A	P84645A	Champagne Metallic 220-249				
P31813A	P31814A	P31858A	P31859A	Light Gold Metallic 220-231				



February 18, 2019  
Page 9

## Gerber 225 High Performance Film manufactured by 3M

Gerber 225 is a high performance 2 mil cast vinyl film on a transparent synthetic liner which is moisture-resistant and offers superior registration for multicolor plotter applications and Gerber EDGE printed graphics. The clear pressure-sensitive adhesive allows for production of attractive two-way markings. Excellent durability with five- to eight-year exterior life.

[Gerber 225 Product Bulletin](#)

15" Punched EDGE READY		30" Punched		225 High Performance	24" Unpunched		48" Unpunched	
10 Yard \$71.06	50 Yard \$284.16	10 Yard \$133.82	50 Yard \$568.33	Color, Color Code	10 Yard \$95.48	50 Yard \$454.66	10 Yard \$190.94	50 Yard \$909.32
P63845A	P63947A	P64253A	P64355A	Black 225-12	P84009A	P84010A	P84013A	P84014A
P63844A	P63946A	P64252A	P64354A	Matte Black 225-22	P84017A	P84018A	P84021A	P84022A
P63833A	P63935A	P64241A	P64343A	Matte White 225-20	P84025A	P84026A	P84029A	P84030A
P63834A	P63936A	P64242A	P64344A	White 225-10	P84033A	P84034A	P84037A	P84038A
15" Punched EDGE READY		30" Punched		225 High Performance	24" Unpunched		48" Unpunched	
10 Yard \$80.53	50 Yard \$330.16	10 Yard \$154.82	50 Yard \$660.36	Color, Color Code	10 Yard \$110.93	50 Yard \$528.27	10 Yard \$221.88	50 Yard \$1056.53
P63840A	P63942A	P64248A	P64350A	Medium Gray 225-31	P84041A	P84042A	P84045A	P84046A
P63847A	P63949A	P64255A	P64357A	Deep Mahogany Brown 225-19	P84049A	P84050A	P84053A	P84054A
P63852A	P63954A	P64260A	P64362A	Beige 225-49	P84057A	P84058A	P84061A	P84062A
P63855A	P63957A	P64263A	P64365A	Bright Yellow 225-15	P84065A	P84066A	P84069A	P84070A
P63856A	P63958A	P64264A	P64366A	Sunflower 225-25	P84073A	P84074A		
P63874A	P63976A	P64282A	P64384A	Tomato Red 225-13	P84081A	P84082A	P84085A	P84086A
P63875A	P63977A	P64283A	P64385A	Geranium 225-63	P84089A	P84090A	P84093A	P84094A
P63876A	P63978A	P64284A	P64386A	Cardinal Red 225-53	P84097A	P84098A	P84101A	P84102A
P63878A	P63980A	P64286A	P64388A	Burgundy 225-58				
P63893A	P63995A	P64301A	P64403A	Sapphire Blue 225-37	P84113A	P84114A	P84117A	P84118A
P63894A	P63996A	P64302A	P64404A	Vivid Blue 225-17	P84121A	P84122A		
P63896A	P63998A	P64304A	P64406A	Intense Blue 225-47	P84129A	P84130A	P84133A	P84134A
P63914A	P64016A	P64322A	P64424A	Dark Green 225-56	P84137A	P84138A	P84141A	P84142A
P63916A	P64018A	P64324A	P64426A	Forest Green 225-66	P84145A	P84146A	P84149A	P84150A
P63918A	P64020A	P64326A	P64428A	Clear Enamel Receptive 225-114	P84153A	P84154A	P84157A	P84158A

## Gerber 225 Metallic High Performance Film manufactured by 3M

Gerber 225 metallic is a high performance 2 mil cast vinyl film with the visual addition of a metallic sparkle, on a transparent synthetic liner which is moisture-resistant and offers superior registration for multicolor plotter applications. This film is perfect for use on cars, trucks, boats, RVs, and signs or markings. Excellent durability with five-year exterior life.

[Gerber 225 Product Bulletin](#)

15" Punched EDGE READY		30" Punched		225 Metallic HP	24" Unpunched		48" Unpunched	
10 Yard \$80.53	50 Yard \$330.16	10 Yard \$154.82	50 Yard \$660.36	Color, Color Code	10 Yard \$110.93	50 Yard \$528.27	10 Yard \$221.88	50 Yard \$1056.53
P63933A	P64035A	P64341A	P64443A	Gold Metallic 225-131	P84169A	P84170A	P84173A	P84174A
P63934A	P64036A	P64342A	P64444A	Silver Metallic 225-120	P84161A		P84165A	



February 18, 2019  
Page 10



# Gerber **230 Translucent High Performance** Film manufactured by 3M

230 Translucent HP		15" Punched EDGE READY		30" Punched	
Color, Color Code		10 Yard \$109.40	50 Yard \$467.82	10 Yard \$209.62	50 Yard \$923.81
White	230-20	P20921C	P20922C	P21948C	P20992C
Ivory	230-005	P21028C	P21029C	P22299C	P22300C
Light Beige	230-149	P37721A	P37707A	P37693A	P37679A
Silver	230-121	P43249A	P43250A	P43257A	P43258A
Silver Gray	230-51	P37714A	P37700A	P37686A	P37672A
Shadow Gray	230-71	P37719A	P37705A	P37691A	P37677A
Slate Gray	230-61	P37716A	P37702A	P37688A	P37674A
Black	230-22	P37708A	P37694A	P37680A	P37666A
Rust Brown	230-63	P20911C	P20912C	P21943C	P20987C
Dark Brown	230-59	P20919C	P20920C	P21947C	P20991C
Duranodic	230-69	P20913C	P20914C	P21944C	P20988C
Burgundy	230-49	P21026C	P21027C	P22297C	P22298C
Raspberry	230-133	P37710A	P37696A	P37682A	P37668A
Mulberry	230-118	P51447A	P51461A	P51475A	P51489A
Vivid Rose	230-78	P37713A	P37699A	P37685A	P37671A
Pink Lavender	230-108	P51444A	P51458A	P51472A	P51486A
Cardinal Red	230-53	P30810A	P30811A	P30822A	P30823A
Dark Red	230-73	P20917C	P20918C	P21946C	P20990C
Scarlet Red	230-83	P51441A	P51455A	P51469A	P51483A
Red	230-33	P20909C	P20910C	P21942C	P20986C
Light Tomato Red	230-43	P30808A	P30809A	P30820A	P30821A
Poppy Red	230-143	P37711A	P37697A	P37683A	P37669A
Orange	230-44	P20907C	P20908C	P21941C	P20985C
Tangerine	230-84	P37717A	P37703A	P37689A	P37675A
Kumquat	230-74	P37718A	P37704A	P37690A	P37676A
Gold Nugget	230-141	P51451A	P51465A	P51479A	P51493A
Metallic Gold	230-131	P37712A	P37698A	P37684A	P37670A
Sunflower	230-25	P30806A	P30807A	P30818A	P30819A
Mango	230-125	P51448A	P51462A	P51476A	P51490A
Yellow	230-015	P20905C	P20906C	P21940C	P20984C
Lemon Yellow	230-115	P51445A	P51459A	P51473A	P51487A
Emerald Green	230-126	P51449A	P51463A	P51477A	P51491A
Holly Green	230-76	P30814A	P30815A	P30826A	P30827A
Green	230-26	P20903C	P20904C	P21939C	P20983C
Bright Jade Green	230-116	P51446A	P51460A	P51474A	P51488A
Vivid Green	230-156	P37715A	P37701A	P37687A	P37673A
Kelly Green	230-146	P51452A	P51466A	P51480A	P51494A
Apple Green	230-106	P51443A	P51457A	P51471A	P51485A
Teal	230-246	P43253A	P43254A	P43261A	P43262A
Turquoise	230-236	P43251A	P43252A	P43259A	P43260A
Dark Blue	230-36	P21030C	P21031C	P22301C	P22302C
Royal Blue	230-87	P20915C	P20916C	P21945C	P20989C
Cobalt Blue	230-157	P51454A	P51468A	P51482A	P51496A
Delft Blue	230-97	P51442A	P51456A	P51470A	P51484A
Blue	230-167	P31344A	P31345A	P31346A	P31347A
Intense Blue	230-127	P37709A	P37695A	P37681A	P37667A
Process Blue	230-337	P49908A	P49909A	P49910A	P49911A
Deep Sky Blue	230-147	P51453A	P51467A	P51481A	P51495A
Olympic Blue	230-57	P30812A	P30813A	P30824A	P30825A
Plum Purple	230-128	P51450A	P51464A	P51478A	P51492A

Gerber 230 is a high performance 3 mil cast vinyl designed for use on internally illuminated signs, awnings and window graphics. It features uniform color with a surface finish that eliminates glare. Five-year exterior life except Metallic Gold and Gold Nugget, which have a three-year exterior life.

[Gerber 230 Product Bulletin](#)



February 18, 2019  
Page 11

## Gerber **280** and **280i Plus** Reflective Sheeting manufactured by 3M

280 Reflective		15" Punched EDGE READY		30" Punched	
Color, Color Code		10 Yard \$204.28	50 Yard \$911.04	10 Yard \$416.04	50 Yard \$1821.93
Gold	280-64	P21020C	P21021C	P21962C	P21008C
Black	280-85	P20899C	P20900C	P21933C	P20977C
Ruby Red	280-82	P37319A	P37320A	P37321A	P37322A
Red	280-72	P28494A	P28495A	P28498A	P28499A
Orange	280-14	P20895C	P20896C	P21936C	P20980C
Lemon Yellow	280-81	P20893C	P20894C	P21934C	P20978C
Yellow	280-71	P28496A	P28497A	P28500A	P28501A
Green	280-77	P20891C	P20892C	P21937C	P20981C
Light Blue	280-76	P39822A	P39823A	P39820A	P39821A
Blue	280-75	P20889C	P20890C	P21932C	P20976C
White	280-10	Use 280i Plus		P21931C	P20975C
White 280i Plus	280-10	P84894A	P84895A		
White 280i Plus is recommended for GERBER EDGE printing					

Gerber 280 is a 7.5 mil reflective sheeting designed for markings requiring high visibility, both day and night. The material has good flexibility and provides excellent conformance to flat or moderately curved substrates. Seven-year exterior life on all colors; five-year exterior life on black.

Series 280i Plus is a 7.5 mil white reflective sheeting designed to provide optimal print results on the Gerber EDGE. It is also removable with heat. Seven-year unprinted exterior life.

[Gerber 280 Product Bulletin](#)  
[Gerber 280i Plus Product Bulletin](#)

## Gerber **210** Dusted and Frosted Crystal Film manufactured by 3M

Dusted Crystal 3 mil film provides the appearance of etched glass. Frosted Crystal 3 mil film provides the appearance of sandblasted glass. These films are perfect for all window, glass, mirror, and clear plastic applications. Three-year exterior life.

[Gerber 210 Crystal Product Bulletin](#)

15" Punched		30" Punched		210 Crystal	24" Unpunched		48" Unpunched	
10 Yard \$123.27	50 Yard \$538.23	10 Yard \$237.33	50 Yard \$1076.59	Color, Color Code	10 Yard \$172.20	50 Yard \$861.00	10 Yard \$344.40	50 Yard \$1722.00
P32442A	P32443A	P32444A	P32445A	Dusted Crystal 210-314	P84342A	P84343A	P84350A	P84351A
10 Yard \$124.47	50 Yard \$540.83	10 Yard \$239.16	50 Yard \$1079.12	Color, Color Code	10 Yard \$172.20	50 Yard \$861.00	10 Yard \$344.00	50 Yard \$1722.00
P35717A	P35718A	P35715A	P35716A	Frosted Crystal 210-324	P84346A	P84347A	P84354A	P84355A

## Gerber **210** Fluorescent Film manufactured by 3M

210 Fluorescent	15" Punched EDGE READY	
Color, Color Code	10 Yard \$129.80	50 Yard
Yellow-Orange 210-404	P48303A	
Lemon-Yellow 210-405	P48304A	
Lime Green 210-406	P48305A	
Pink 210-413	P48307A	
Red-Orange 210-414	P48534A	

Gerber 210 Fluorescent is a vibrant, attention-getting 2 mil film that provides excellent visibility under normal or low light conditions. It is perfect for point of purchase, window graphics, and displays. One-year exterior life.

[Gerber 210 Fluorescent Product Bulletin](#)



February 18, 2019  
Page 12

---

## Gerber **220 Easy Apply** Film manufactured by 3M

220 Easy Apply		15" Punched EDGE READY	
Color, Color Code		10 Yard	50 Yard
		\$88.03	\$360.28
White	180-10	P84750A	P84751A

Gerber 220 Easy Apply is a high performance, 2 mil, gloss vinyl optimal for GERBER EDGE-printing, which features pressure-activated adhesive to simplify application of graphics on flat, corrugated and riveted surfaces. Its pigmented adhesive provides maximum color opacity and a non-visible air egress feature. Six- to seven-year exterior life.

[Gerber 220 Easy Apply Product Bulletin](#)

---

## Gerber **QUANTUM II Intermediate** Film

Quantum II	15" Punched EDGE READY		30" Punched	
	10 Yard	50 Yard	10 Yard	50 Yard
Color		\$69.83		\$139.71
White		P84839A		P84842A
Color	10 Yard	50 Yard	10 Yard	50 Yard
		\$70.79		\$141.63
Black		P84845A		P84848A
Matte White		P84907A		
Yellow		P84851A		
Red		P84857A		

Quantum II is an intermediate performance, polymeric film with a solvent-based, acrylic adhesive perfect for interior and exterior graphics requiring up to 5-year durability. Quantum II's improved formulation offers better printability on the Gerber EDGE and a higher gloss level than Quantum 2000.

[Quantum II Product Bulletin](#)

---

## Gerber **QUANTUM 2000 Intermediate** Film

Quantum 2000	15" Punched EDGE READY		30" Punched	
	10 Yard	50 Yard	10 Yard	50 Yard
Color				\$147.30
Yellow				P69146A
Red				P69144A

Quantum 2000 is an intermediate performance, polymeric film with a solvent-based, acrylic adhesive perfect for interior and exterior graphics requiring up to 5-year durability.

[Quantum 2000 Product Bulletin](#)

---

## Gerber **InstaChange Removable** Film

InstaChange		15" Punched EDGE READY	
Color		10 Yard	50 Yard
		\$65.12	\$279.80
White		P63030A	P63031A

Gerber InstaChange is a white 4.6 mil vinyl film with a gray pigmented adhesive system that is removable for up to two years with no adhesive residue. The pigmented adhesive also allows for maximum opacity of graphics.

[InstaChange Product Bulletin](#)



---

## Gerber **Static Cling** Film

Static Cling	15" Punched EDGE READY	
Color	10 Yard	50 Yard
	\$46.94	\$148.80
Clear	P50823A	P50824A
Color	10 Yard	50 Yard
	\$48.39	\$152.83
White	P53201A	P53202A

Gerber Static Cling films are designed to adhere to glass without adhesive. These 7 mil specialty vinyls can be printed with the Gerber EDGE or decorated with vinyl graphics. Intended for interior application.

[Static Cling Product Bulletin](#)

---

## Gerber **ImageCal "R"** Removable Film

ImageCal R	15" Punched EDGE READY	
Color	10 Yard	50 Yard
	\$55.02	\$172.94
White	P72778A	P72779A
Color	10 Yard	50 Yard
	\$50.39	\$158.37
Clear	P65587A	P65588A

Gerber ImageCal "R" is a removable vinyl designed for use with Gerber EDGE Systems and GerberColor Foils. Gerber ImageCal "R" is available in two formats that have slightly different characteristics.

Gerber ImageCal "R" Clear is a 3.5 mil, durable, removable, calendared vinyl. For up to six months after application, the film's unique adhesive allows the graphic to be removed from most surfaces with little or no residue left behind and without the aid of chemicals or accessories.

Gerber ImageCal "R" White is a 4 mil removable vinyl which can be reused up to 5 times within one year without leaving residue or losing the strength of its adhesive bond.

[ImageCal R Product Bulletin](#)

---

## Gerber **GerberVision II** Film manufactured by 3M

GerberVision II	15" Punched EDGE READY	
Color	10 Yard	50 Yard
	\$210.50	\$1012.01
White	P84488A	P84489A

GerberVision II is a perforated 4 mil window film suitable for all types of clear substrate displays, including transit graphics, retail windows, and P.O.P. displays. Its clear adhesive system allows for easy removal and replacement.

[GerberVision II Product Bulletin](#)

---

## Gerber **GerberGlow** Film

GerberGlow	15" Punched EDGE READY	
Color	10 Yard	50 Yard
	\$174.77	\$822.86
Light Yellow-Green - Gloss	P68499A	P68500A

GerberGlow, a novelty grade "glow-in-the-dark" film, is a 2.5 mil vinyl designed for use with the GERBER EDGE and GerberColor Foils. A charge time of one hour gives the film a bright glow for over 30 minutes, making it an excellent choice for promotional items, interior signage, and other novelty applications.

[GerberGlow Product Bulletin](#)



February 18, 2019  
Page 14



---

## Gerber **Luminous** Film manufactured by 3M

Luminous	15" Punched EDGE READY	
Color	10 Yard	25 Yard
	\$447.99	\$1072.18
Light Yellow-Green, Matte	P68495A	P68496A

This 9 mil, durable, "glow-in-the-dark" vinyl is for applications that require maximum visibility for both day and night viewing, suitable for interior safety signage, and identification signs and markings. Gerber Luminous film will "glow" for up to 6 hours and takes only 3 minutes to recharge. Luminous material meets International Maritime Organization, National Fire Protection Association, and Federal Railroad Administration requirements.

[Gerber Luminous Product Bulletin](#)

---

## Gerber **HoloGraphix** Film

HoloGraphix	15" Punched EDGE READY	
Color	10 Yard	50 Yard
	\$65.15	\$293.21
Mosaic	P63224A	P63225A
Silver Sheen	P63221A	P63222A
Kaleidoscope	P63227A	P63228A
Color	10 Yard	50 Yard
	\$72.20	\$324.91
Water Drop	P83222A	P83223A

Holographic 3.6 mil film available in four different patterns that range from a mirror finish (Silver Sheen) to prismatic Kaleidoscope.) Each pattern creates a spectrum of color that adds dynamic visual effects to your graphics. Combine with GerberColor Transparent (GCT) foils for truly spectacular results. Recommended for interior applications.

[HoloGraphics Product Bulletin](#)

---

## Gerber **ImageCal "P"** Permanent Film

Image Cal "P"	15" Punched EDGE READY	
Color	10 Yard	50 Yard
	\$40.36	\$140.22
Clear	P65583A	P65584A

A clear, calendered 4 mil vinyl film with a permanent adhesive system. Two-year exterior life.

[ImageCal P Product Bulletin](#)

---

## Gerber **ImageCast** Film manufactured by 3M

ImageCast	15" Punched EDGE READY	
Color	10 Yard	50 Yard
	\$71.87	\$287.60
Clear	P65579A	P65580A

Cast 2.5 mil vinyl film with a clear adhesive system suitable for all types of graphic displays. This material is similar to Clear Enamel Receptive without the enamel receptive coating. Five-year exterior life.

[ImageCast Product Bulletin](#)

## Gerber **PermaGrip** Film

<b>PermaGrip</b>	<b>15" Punched EDGE READY</b>	
<b>Color</b>	<b>10 Yard</b>	<b>50 Yard</b>
	<b>\$81.31</b>	<b>\$334.80</b>
White	AP75517 -10y	AP75517 -50y

Gerber PermaGrip is a durable, permanent cast vinyl film for use with Gerber EDGE Systems and GerberColor foils. It is dimensionally stable and has an extremely aggressive pigmented adhesive system that provides superior hiding power when applied over colored surfaces. Gerber PermaGrip is edge-stripped to eliminate buildup of adhesive

residue on sprocketed equipment. Gerber PermaGrip is ideally suited for a wide variety of commercial, industrial and safety applications. It can be used to create interior and exterior labels, emblems, logos and signs on many surfaces including, flat, moderately compound curved and moderately-rough surfaces and some low surface energy materials. The user should determine the suitability of all substrates prior to actual application. This film is not recommended for use on corrugated, riveted or highly irregular surfaces. It is not recommended for flexible sign face or flexible banner material. It is also not intended for applications where petrochemical contact may occur. If petrochemical exposure is anticipated, refer to the Product Bulletin for information on protecting graphics.

[PermaGrip Product Bulletin](#)

## Gerber **Label Stock – 1 mil**

<b>1 mil Label Stock</b>	<b>15" Punched EDGE READY</b>	
<b>Color</b>	<b>10 Yard</b>	<b>50 Yard</b>
	<b>\$45.85</b>	<b>\$169.25</b>
Clear	P59875A	P59876A
<b>Color</b>	<b>10 Yard</b>	<b>50 Yard</b>
	<b>\$49.63</b>	<b>\$183.36</b>
White	P59881A	P59882A

Polyester, 1 mil material, custom-formulated for use in the Gerber EDGE for the production of countless commercial and industrial applications which require labels, decals, and identification nameplates.

[Label Stock Product Bulletin](#)

## Gerber **Label Stock – 2 mil**

<b>2 mil Label Stock</b>	<b>15" Punched EDGE READY</b>	
<b>Color</b>	<b>10 Yard</b>	<b>50 Yard</b>
	<b>\$57.25</b>	<b>\$211.57</b>
Clear	P59878A	P59879A
<b>Color</b>	<b>10 Yard</b>	<b>50 Yard</b>
	<b>\$62.50</b>	<b>\$230.94</b>
White	P59884A	P59885A
<b>Color</b>	<b>10 Yard</b>	<b>50 Yard</b>
	<b>\$66.79</b>	<b>\$246.82</b>
Matte Silver	P60557A	P60558A
<b>Color</b>	<b>10 Yard</b>	<b>50 Yard</b>
	<b>\$49.75</b>	<b>\$199.00</b>
Shiny Silver	P84501A	P84502A

Polyester, 2 mil material, custom-formulated for use in the Gerber EDGE for the production of countless commercial and industrial applications which require labels, decals, and identification nameplates.

[Label Stock Product Bulletin](#)



February 18, 2019  
Page 16

---

## Gerber **PermaGrip Label Stock – 2 mil**

PermaGrip	15" Punched EDGE READY	
Color	10 Yard	50 Yard
	\$75.30	\$276.98
White	P83928A	P83929A

This 2 mil white polyester label stock has an aggressive adhesive that sticks to low surface energy (LSE) substrates such as powder coat paint. This material is UL recognized at temperatures up to 302 degrees F.

[PermaGrip Label Stock Product Bulletin](#)

---

## Gerber **Security Label Stock**

2 mil Label Stock	15" Punched EDGE READY	
Color	10 Yard	50 Yard
	\$67.01	\$275.76
Chrome Silver	P63033A	P63034A
Color	10 Yard	50 Yard
	\$63.28	\$261.55
White	P82891A	P82892A

This 2-mil product was developed for use with the Gerber EDGE for production of identification markings with tamper-evident protection. Once printed and applied, the word VOID appears, on both the applied surface and the material, if the label is removed.

[Security Label Stock Product Bulletin](#)

---

## Gerber **Non-Transfer Void Security Label Stock**

Non-Transfer Void	15" Punched EDGE READY	
Color	10 Yard	50 Yard
	\$155.00	\$625.00
Matte Blue	P84904A	P84905A

Gerber Non-Transfer Void Security Label Stock is a tamper-evident material designed to produce non-reusable label seals which contain a message of "VOID OPEN" in the face material when removed. Gerber Non-Transfer Void Security Film adhesive leaves no residue when removed within 90 days on many application surfaces, eliminating the time and effort to clean the adhesive left by other types of security labels. The compact "VOID OPEN" message permits manufacture of labels as small as 10mm x 30mm. One-year exterior life.

[Non-Transfer Void Security Label Stock Product Bulletin](#)

---

## Gerber **Brushed Polyester Label Stock - 1 and 2 mil**

Brushed Polyester	15" Punched EDGE READY	
Color	10 Yard	50 Yard
	\$46.96	\$177.03
1 mil Brushed Gold	P61297A	P61296A
1 mil Brushed Silver	P61300A	P61299A
Color	10 Yard	50 Yard
	\$56.76	\$226.04
2 mil Brushed Gold	P61288A	P61289A
2 mil Brushed Silver / Aluminum	P61285A	P61286A

Polyester, 1 or 2 mil material, custom-formulated for use in the Gerber EDGE for the production of countless commercial and industrial applications which require labels, decals, and identification nameplates, including architectural graphics. Brushed Gold is not recommended for exterior applications.

[Label Stock Product Bulletin](#)



February 18, 2019  
Page 17

---

## Gerber **LexEdge II - 5 mil**

5 mil LexEdge II	15" Punched EDGE READY	
Color	10 Yard	50 Yard
Velvet/Polished	\$120.39	\$481.55
	P75654A	P75655A

LexEdge II 5 mil is a custom-formulated, Lexan® based polycarbonate (Lexan 8A35) designed for use with Gerber Digital Color Printing Systems and GerberColor foils. LexEdge II 5-mil is dimensionally stable and resists tearing, abrasion, and heat. LexEdge II 5-mil is ideally suited for the production of dynamic sub-surface graphics including membrane switches, keyboard overlays, architectural signs, and exhibit/display work.

[LexEdge II 5-mil Product Bulletin](#)

---

## Gerber **LexEdge II - 10 mil**

10 mil LexEdge II	15" Punched EDGE READY	
Color	10 Yard	50 Yard
Matte	\$124.05	\$496.25
	P63562A	P63563A

Semi-rigid, 10 mil Lexan with a custom-formulated print surface specifically designed for use with the Gerber EDGE. Ideally suited for the production of exhibits, displays, signs, and all types of sub-surface graphics.

[LexEdge II 10-mil Product Bulletin](#)

---

## Gerber **LexEdge FR65**

LexEdge FR65	15" Punched EDGE READY	
Color	10 Yard	50 Yard
Matte	\$146.14	\$584.56
	P82888A	P82889A

Semi-rigid, 10 mil flame retardant Lexan material which meets the UL94 V-0 rating, for use in the production of sub-surface graphics for industries that require fire retardant material for aircraft, electrical and electronic applications.

[LexEdge FR65 Product Bulletin](#)

---

## Gerber **LexEdge Clear**

LexEdge Clear	15" Punched EDGE READY	
Color	10 Yard	50 Yard
Clear	\$184.26	\$767.36
	P67002A	P67003A

LexEdge Clear is a clear, polished 10 mil Lexan material, designed for use with the Gerber EDGE. A polished version of our current LexEdge II product, LexEdge Clear provides a perfect tool for creating architectural signage, point-of-purchase displays, exhibit graphics, and membrane switch applications. In order to protect its polished surface, LexEdge Clear has a removable, protective mask on the print side of the material for optimal output.

[LexEdge Clear Product Bulletin](#)



---

## Gerber **LexEdge Outdoor**

LexEdge Outdoor	15" Punched EDGE READY	
Color	10 Yard	50 Yard
	\$192.94	\$803.37
Matte	P72790A	P72791A

Outdoor durable, this semi-rigid, matte, 10-mil Lexan has a custom-formulated print surface specifically designed to resist tearing, abrasion and yellowing effects of UV exposure. Formulated for use with the Gerber EDGE for printing directly onto the final substrate in second surface applications. Ideally suited for the production of ATM/bank, equipment labels, gas station graphics, menu boards and other outdoor graphic displays. Vertical exterior performance life of 3 to 5 years.

[LexEdge Outdoor Product Bulletin](#)

---

## Gerber **PVC-10 Shelf and Tag**

PVC 10	15" Punched EDGE READY	
Color	10 Yard	50 Yard
	\$63.96	\$266.03
White	P81132A	P81133A

PVC-10 Shelf and Tag is a white, 10 mil, semi-rigid PVC material. It has been custom formulated for use with Gerber EDGE Systems that use EDGE READY Materials and GerberColor Foils. PVC-10 Shelf and Tag can also be decorated with cut-vinyl graphics.

The semi-rigid construction of PVC-10 Shelf and Tag makes it ideally suited for a number of non-pressure-sensitive applications including signs, menu boards, point-of-purchase displays, permits, identification tags, and door hangers.

[PVC-10 Shelf and Tag Product Bulletin](#)

---

## Gerber **Metallized Polyester Film**

Metallized Polyester	15" Punched EDGE READY	
Color	10 Yard	50 Yard
	\$54.58	\$217.35
Brushed Silver / Aluminum	P61285A	P61286A
Color	10 Yard	50 Yard
	\$51.74	\$206.96
Shiny Silver	P84501A	P84502A

Polyester, 2 mil film with a mirror look on both sides of the material for two sided interior and limited exterior use. Suitable for printing on the Gerber EDGE.

[Metallized Polyester Product Bulletin](#)

---

## Gerber **Heat Transfer Textile Graphics Film**

Heat Transfer	15" Punched EDGE READY		
Color	5 Meter	10 Meter	25 Meter
	\$57.56	\$112.13	\$269.81
White	P84942A	P84943A	P84944A

Textile graphics film for printing on the Gerber EDGE. Offers excellent printability and washability on a variety of fabrics, including cotton, polyester and less standard polyamide substrates such as Nylon.

[Heat Transfer Product Bulletin](#)

---

## Gerber **GerberMag™ II**

GerberMag II	15" Punched EDGE READY	
Color	25 Feet	
	\$128.34	
White	P81506A	

Flexible, 19 mil, magnetic material, with a smooth matte white surface, designed for optimal printing on the Gerber EDGE. Output contour cut on any Gerber OMEGA™ compatible 15" plotter. Used in the production of custom ad specialty magnets.

[GerberMag II Product Bulletin](#)

---

## Gerber **AutoMag™ II**

AutoMag II	15" Punched EDGE READY	
Color	25 Feet	
	\$161.66	
White	P81508A	

Vehicle-strength 24 mil magnetic material used in the production of custom, removable vehicle graphics. Flexible magnetic material, **with a new, smoother matte white surface**, designed for optimal printing on the Gerber EDGE. Output contour cut on any OMEGA compatible 15" plotter.

[AutoMag II Product Bulletin](#)

---

## Gerber **Gerber Guard™** – Overlamine manufactured by 3M

Gerber Guard	15" Punched	
Color	10 Yard	50 Yard
	\$75.07	\$307.08
Clear	P61385A	P61386A

Not intended for printing. Gerber Guard is designed to provide additional protection from petroleum-based or other chemicals, as well as increased abrasion resistance due to exposure to severe handling conditions. Gerber Guard's glossy characteristic creates a more lustrous finish when applied to Gerber EDGE-produced graphics. May also be used on unprinted vinyl film with the same quality results.

[Gerber Guard Product Bulletin](#)

---

## Gerber **StrikeGuard™** – Overlamine

Gerber StrikeGuard	13" Unpunched	
Color	10 Yard	50 Yard
	\$54.42	\$230.26
Clear	P76480A	P75963A

Gerber StrikeGuard is an extra-thick (8 mil), flexible clear overlamine designed to provide EDGE®-printed graphics with extreme protection from forceful impact. It has been developed as part of a great new system for producing helmet decals and for decorating "extreme sports" equipment, including recreational vehicles

[Gerber StrikeGuard Product Bulletin](#)

---

## Gerber **UVGuard™** – Overlamine

Gerber UVGuard	15" Punched	
Color	10 Yard	50 Yard
	\$89.08	\$394.16
Clear	P84883A	P84884A

Not intended for printing. Gerber UVGuard is a 1.2 mil, clear, laminating film designed to further expand the resistance to weathering of graphics printed (or cut) on Gerber Series 220, 225, 280i Plus with Gerber EDGE Systems and GerberColor Foils. Will also provide resistance to the effects of mildew and graffiti. The expected performance life of the graphic will be improved to seven years. (The performance life of GC Spot Pink (GCS-643) will not be affected by Gerber UVGuard.)

[Gerber UVGuard Product Bulletin](#)



February 18, 2019  
Page 20

---

## Gerber **UVGuard 9** – Overlamine

manufactured by 3M

Gerber UVGuard 9	15" Punched	
Color	10 Yard	50 Yard
	\$182.63	\$808.06
Clear	P84370A	P84371A

Not intended for printing. Gerber UVGuard 9 is a glossy 2 mil, clear, PVC laminating film with a graphic protection system top coat designed to further expand the resistance to weathering of graphics printed (or cut) on Gerber Series 220, 225, 280i Plus films with Gerber EDGE Systems and GerberColor Foils. Gerber UVGuard 9 has the highest protection from UV fade. The expected performance life will be improved to nine years.

[Gerber UVGuard 9 Product Bulletin](#)

---

## Gerber **Edge Positive** – Screen Print Film

Edge Positive	15" Punched EDGE READY	
Color	10 Yard	50 Yard
	\$48.85	\$195.36
Clear	P54964A	P54965A

Crystal clear, 7 mil, top-coated polyester film, custom-formulated for Gerber EDGE use in the production of screen printing film positives. Designed for use with Spot Black Foil (GCS-12). For denser black use Jet Black (GCX12).

[Edge Positive Product Bulletin](#)

---

## Gerber **Screen Printing and Graphic Arts** Films

Materials designed for the screen printing professional. These films have been carefully selected and developed for use on Gerber systems.

Cut Green	15" Punched		30" Punched	
Water Soluble – for use with solvent based inks	25 Feet	50 Yard	25 Feet	50 Yard
	\$73.65	\$419.21		\$721.72
Ulano® Cut Green Stencil	P20950C	P20951C		P21004C

Rubylith	15" Punched		30" Punched	
Light safe film on polyester backing – special adhesive allows for re-positioning	25 Feet	50 Yard	25 Feet	50 Yard
	\$64.01	\$364.83	\$107.64	\$645.81
Ulano Rubylith Universal Mask	P20946C	P20947C	P21958C	P21002C

StaSharp®	15" Punched		30" Punched	
Solvent soluble – for use with water-based inks	25 Feet	50 Yard	25 Feet	50 Yard
	\$66.28	\$377.29		\$669.89
Ulano S3S-StaSharp Stencil	P20952C	P20953C		P21005C



## Gerber GerberMask™ ULTRA – Masking Material

GerberMask ULTRA is a 4 mil white vinyl film, coated with a **low-tack** removable adhesive now on a **new moisture-resistant liner**. Designed to be used as stencil masking film for application to a variety of smooth, flat substrates. The low-tack adhesive allows easy removal from substrates, with no adhesive transfer. Suitable for use on glass, Plexiglas, polycarbonate, flexible vinyl, stainless steel. **NOTE:** GerberMask ULTRA has a low-tack adhesive for easy removal from high energy surfaces. Rough, uneven, or curved surfaces may require a more aggressive adhesive. GerberMask ULTRA II stencil mask with high-tack adhesive is available if greater substrate adhesion is required.

[GerberMask ULTRA Product Bulletin](#)

15" Punched		30" Punched		GerberMask ULTRA	20" Unpunched		45" Unpunched	
10 Yard	50 Yard \$184.56	10 Yard	50 Yard \$364.05	Color	10 Yard	50 Yard \$243.64	10 Yard	50 Yard \$552.67
	P81773A		P81780A	GerberMask ULTRA (Green logo liner)		P81776A		P81336A

## Gerber GerberMask Yellow ULTRA – Masking Material

GerberMask Yellow ULTRA is a 4 mil yellow vinyl film, coated with a **low-tack** removable adhesive on a paper liner developed as a high contrast stencil for painted graphics for application to a variety of smooth, flat surfaces. The yellow face film makes weeding and application easier especially when the stencil is applied to a white surface.

[GerberMask Yellow ULTRA Product Bulletin](#)

15" Punched		30" Punched		GerberMask ULTRA Yellow	24" Unpunched		48" Unpunched	
10 Yard	50 Yard \$138.77	10 Yard	50 Yard \$268.22	Color	10 Yard	50 Yard	10 Yard	50 Yard \$406.99
	P83157A		P83158A	GerberMask ULTRA Yellow				P83159A

## Gerber GerberMask ULTRA II – Masking Material

GerberMask ULTRA II is a durable, conformable 4 mil white vinyl film, coated with **aggressive** acrylic removable adhesive now on a **new moisture-resistant liner**. Designed to hold during light sandblasting, acid etching, or paint applications. Removable, with no adhesive transfer. Suitable for use on glass, Plexiglas, stainless steel, unfinished and finished wood surfaces. **DO NOT APPLY GerberMask ULTRA II TO FLEXIBLE VINYL FILM.**

**NOTE:** GerberMask ULTRA II has a high-tack adhesive that will adhere strongly to smooth, high-energy substrates, such as Plexiglas or polycarbonate. Requires some effort to remove. GerberMask ULTRA, with low-tack adhesive, may be more suitable for this type of application. GerberMask ULTRA can be used on flexible vinyl substrates.

[GerberMask ULTRA II Product Bulletin](#)

15" Punched		30" Punched		GerberMask ULTRA II	20" Unpunched		45" Unpunched	
10 Yard	50 Yard \$184.56	10 Yard	50 Yard \$364.05	Color	10 Yard	50 Yard \$243.64	10 Yard	50 Yard \$552.67
	P82758A		P82761A	GerberMask ULTRA II (Black logo liner)		P82759A		P82762A



February 18, 2019  
Page 22



---

## Gerber Drawing and Pouncing Paper

Drawing Paper	15" Punched		30" Punched	
Color	10 Yard	500 Feet \$54.33	10 Yard	300 Feet \$70.04
Plain White 20#		P20944C		P21965C

Paper for producing scaled or full-size line drawings and pounce patterns.

---

## Gerber Sandblast Material

Sandblast Stencil	15" Punched		30" Punched	
	10 Yard	50 Yard	10 Yard	50 Yard
	\$214.93		\$417.89	
Series 1532 Single Liner	P78072A		P78076A	
Color	10 Yard	50 Yard	10 Yard	50 Yard
	\$357.27			
Series 519YP Double Liner	P82169A			

Rubber masking stencil for sandblasting glass, stone, treated and untreated wood. Gerber Sandblast Series 1532™ one-liner sandblast stencil has a low-friction coating. Gerber Sandblast Series 519YP features a double liner with a yellow translucent polyester inner liner that gives cut stencils improved visibility.

[519YP Sandblast Product Bulletin](#)

---

## Gerber Standard Application Tape

NOTE: GSP recommends and warrants the use of Standard Tack Application Tape in applying graphics produced by the Gerber EDGE.

Width	Length	Part Number	Price
3¼" wide	100 yards	P79369A	\$17.13
6½" wide	100 yards	P79370A	\$38.80
12" wide	100 yards	P79371A	\$77.83
14" wide	100 yards	P79372A	\$90.33
30" wide	100 yards	P79374A	\$162.15

---

## Gerber IP Surface Cleaner

Description	Part Number	Price
IP Surface Cleaner – 1 Liter	MIP1010	\$11.50

---

## 3M™ Adhesive Transfer Tape 467MP & 468MP

These adhesives complement our LexEdge and Static Cling applications. The laminating adhesives provide the finish step in the production of decals.

[Laminating Adhesive Product Bulletin](#)

	Width	Length	Part Number	Price
Adhesive Transfer Tape 467MP	12" wide	60 yards	P83178A	\$261.49
Adhesive Transfer Tape 468MP	12" wide	60 yards	P83177A	\$339.94



February 18, 2019  
Page 23

# ImagePerfect™ Digital Materials from Gerber Technology

ImagePerfect Digital Materials from Gerber Technology are specifically designed for digital printing on large-format inkjets and are suitable for printing with eco-solvent, solvent, latex and UV-cured inks, except where noted. These media offer first-class printability with remarkable text definition and a large color gamut to ensure colorful images and area fills.

## ImagePerfect 2125 Banner, Frontlit

IP 2125	54" Unpunched	
Color	36 Meter 39.4 Yard	50 Meter
	\$165.00	
Satin White	P84926A	

**15 oz/y<sup>2</sup> (520g/m<sup>2</sup>) 18.5mil** Premium coated banner with excellent printability and thermal welding characteristics, for indoor and outdoor applications such as billboards at trade shows and events, construction sites, show rooms, promotional campaigns and many other applications. Also used as a display product fixed in a banner track system.

[ImagePerfect 2125 Product Bulletin](#)

## ImagePerfect 2214 Medium Weight Mesh

IP 2214	54" Unpunched	
Color	30 Meter	50 Meter 54.7 Yard
		\$249.00
Matte White		P84919A

**9 oz/y<sup>2</sup> (300g/m<sup>2</sup>) 16mil** Strong, medium-weight mesh for indoor and outdoor applications such as advertising at trade shows and events, show rooms, construction sites and promotional campaigns where a see through effect is required. The flexible fire-retardant fabric features a stable printing liner, very regular structure and excellent flat hanging properties. Thermal welding allows for a strong seam. Not suitable for printing with UV-cure inks.

[ImagePerfect 2214 Product Bulletin](#)

## ImagePerfect 2405 Poster Paper

IP 2405	54" Unpunched	
Color	30 Meter	50 Meter 54.7 Yard
		\$118.00
Semi-Gloss White		P84920A

**4 oz/y<sup>2</sup> (135g/m<sup>2</sup>) 6.5mil** Watertight and extremely scratchproof paper (even when wet) intended for indoor and short-term outdoor use. Top coated for exceptionally high-quality and economical printing.

[ImagePerfect 2405 Product Bulletin](#)

## ImagePerfect 2605 Semi-Rigid Backlit

IP 2605	54" Unpunched	
Color	30 Meter 32.8 Yard	50 Meter
	\$286.00	
White	P84918A	

**5 oz/y<sup>2</sup> (175g/m<sup>2</sup>) 8.5mil** Semi-rigid translucent sign face product ideally suited for indoor backlit use in illuminated sign boxes and point-of-sale and retail applications. This specially-coated polyester film guarantees even light distribution and translucence for optimum impact.

[ImagePerfect 2605 Product Bulletin](#)



February 18, 2019  
Page 24

---

## ImagePerfect 2310 Artistic Canvas

IP 2310	54" Unpunched	
Color	30 Meter 32.8 Yard \$551.00	50 Meter
Matte White	P84923A	

**13 oz/y<sup>2</sup> (440g/m<sup>2</sup>) 21mil** Canvas textile printing medium which guarantees the look and feel of real artistic painting reproductions. (Not suitable for printing with latex inks.)

[ImagePerfect 2310 Product Bulletin](#)

---

## ImagePerfect 2320 Artistic Fine Art Canvas

IP 2320	54" Unpunched	
Color	30 Meter 32.8 Yard \$334.00	50 Meter
Matte White	P84924A	

**12 oz/y<sup>2</sup> (400g/m<sup>2</sup>) 20.5mil** Fine art canvas textile for the creation of printed output with the look of real artistic paintings. Designed for the presentation of artworks and photos as full color reproductions, where the structure of the fabric is very pronounced and decorative. Common uses include reproductions of fine art paintings, textile walls, textile billboards and posters and exhibition panels. Also used as a display product fixed in a banner track system.

[ImagePerfect 2320 Product Bulletin](#)

---

## ImagePerfect 2324 Wall Textile

IP 2324	54" Unpunched	
Color	30 Meter	50 Meter 54.7 Yard \$749.00
Matte White		P84946A

**7mil** Self-adhesive, opaque and water-resistant fabric for application as wallpaper, wall art and wall graphics.

[ImagePerfect 2324 Product Bulletin](#)

---

## ImagePerfect 2325 Display Premium

IP 2325	63" Unpunched	
Color	25 Meter 27.3 Yard \$299.00	50 Meter
Matte White	P84947A	

**6 oz/y<sup>2</sup> (200g/m<sup>2</sup>) 10mil** Special polyester fabric for a wide variety of soft signage and textile display applications, including UV backlit installation. Air tight and water tight with good lay flat properties, excellent crease-resistant properties and no fraying of the edges. This is the ideal premium banner for offices, retail environments, and lifestyle and event business locations.

[ImagePerfect 2325 Product Bulletin](#)

---

## ImagePerfect 2528 Monomeric Vinyl

IP 2528	54" Unpunched	
Color	30 Meter	50 Meter
Gloss White		54.7 Yard <b>\$153.00</b> P84925A

**3mil** Monomeric vinyl with a permanent acrylic adhesive for indoor and outdoor applications on flat, smooth surfaces, such as point-of-sale and promotional installations. Excellent lay flat properties. (Not suitable for printing with 3<sup>rd</sup> generation latex on 300 series printers.)

[ImagePerfect 2528 Product Bulletin](#)

---

## ImagePerfect 2536PA Light Silver Frost

IP 2536PA	54" Unpunched	
Color	30 Meter	50 Meter
Light Silver Frost		54.7 Yard <b>\$569.00</b> P84927A

**3mil** Semi-opaque decorative polymeric vinyl window film suitable for creating an etched glass or matte effect on glass and other clean, dry surfaces. PerfectApply technology facilitates repositioning and bubble-free application.

[ImagePerfect 2536PA Product Bulletin](#)

---

## ImagePerfect 2915 Roll-Up Display, Silver Back

IP 2915	42" Unpunched	
Color	30 Meter	50 Meter
Matte White	32.8 Yard <b>\$207.00</b> P84928A	

**6.5 oz/y<sup>2</sup> (220g/m<sup>2</sup>) 7mil** Silver-backed vinyl print medium for a wide range of display and roll-up applications with excellent layflat properties and very high levels of opacity for applications in which a 100% blockout effect is required.

[ImagePerfect 2915 Product Bulletin](#)

---

## ImagePerfect 2905 Roll-Up Display, Blockout

IP 2905A	36" Unpunched	
Color	25 Meter	50 Meter
Matte White	27.3 Yard <b>\$309.00</b> P84929A	

**7.5 oz/y<sup>2</sup> (250g/m<sup>2</sup>) 8mil** High quality print medium with excellent layflat and blockout properties for POS and roll-up display systems in which a 100% blockout effect is required.

[ImagePerfect 2905 Product Bulletin](#)

---

## ImagePerfect 2555 StreetApp

IP 2555	48" Unpunched	
Color	25 Meter	50 Meter
Matte White	27.3 Yard <b>\$825.30</b> P84948A	54.7 Yard <b>\$1572.00</b> P84921A

**6mil** Textured, scuff-resistant print medium with a non-slip surface specially engineered for application of graphics to asphalt, tarmac, pavements, concrete, walls, etc.

[ImagePerfect 2555 Product Bulletin](#)



---

## ImagePerfect 2558 MultiGrip

IP 2558	54" Unpunched	
Color	30 Meter	50 Meter 54.7 Yard \$449.00
Semi-Gloss White		P84922A

3.5mil Vinyl with a permanent, aggressive, high-tack adhesive for indoor and outdoor applications on LSE (low surface energy) substrates and other "hard to stick to" surfaces such as brick, concrete, and stone.

[ImagePerfect 2558 Product Bulletin](#)

---

## Gerber Material Management Systems

Gerber Material Management Systems facilitate clean, wrinkle-free and unattended operation by controlling the feeding and take up of substrates during printing and cutting, improving workflow and reducing work space requirements.

[Gerber Material Management Systems Product Bulletin](#)

Description	Part Number	Price
Gerber EDGE FX MMS	P84937A	<b>\$3,595</b>
Gerber enVision 375 MMS	P84938A	<b>\$6,555</b>

---

## Gerber Label Finishing System

The Gerber Label Finishing System automatically weeds decal-cut labels and rewinds finished label strips on one or more spools. This system requires a compressed air source.

[Gerber Label Finishing System Product Bulletin](#)

Description	Part Number	Price
Gerber Label Finishing System	Coming soon!	



February 18, 2019  
Page 27



# Gerber **Accessories**

## GERBER EDGE

Description	Part Number	Price
Cleaning Card, Thermal Printhead, 25 per box	P66530B	<b>\$18.32</b>
Registration Eyepiece - Envision/ODYSSEY™	P67283B	<b>\$71.00</b>
Registration Eyepiece - HS/GS and older	P50136B	<b>\$75.00</b>

## Gerber enVision 375 and 750

Description	Part Number	Price
EnVision 375 & 750 - 30° Knife Blades, Set of 2	P63681B	<b>\$55.00</b>
EnVision 375 & 750 - 45° Knife Blades, Set of 2	P63679B	<b>\$55.00</b>
EnVision 375 & 750 - 60° Knife Blades, Set of 2	P63680B	<b>\$55.00</b>
EnVision 375 & 750 - Pen, Felt Tip Black - Set of 5	P59259A	<b>\$31.50</b>
EnVision 375 & 750 - Swivel Knife Assembly with 45° Blade	P65916B	<b>\$156.25</b>
EnVision 375 Cutting Strip, 15"	P66119B	<b>\$15.75</b>
EnVision 375 Registration Eyepiece	P67283B	<b>\$71.00</b>

## GS, HS, GS<sup>plus</sup> and HS<sup>plus</sup> Plotter

Description	Part Number	Price
<i>Tangential Blade Holder and Blades for GS and HS Plotters</i>		
Knife Holder with 30° Blade	P56734A	<b>\$70.83</b>
Knife Holder with 60° Blade	P56737A	<b>\$92.71</b>
Knife Blade, 30° Carbide	P17156B	<b>\$22.00</b>
Knife Blade, 30° Super Sharp	P30033B	<b>\$25.00</b>
Knife Blade, 45° Carbide, for Sandblast Stencil	P33489B	<b>\$25.00</b>
Knife Blade, 60° Carbide, for Sandblast Stencil	P37311B	<b>\$25.00</b>
<i>Swivel Blades Holder and Blades for HS and GS Plotters – also called drag knives</i>		
Knife Assembly, HS Swivel	P56530B	<b>\$355.00</b>
Knife Blade, HS Swivel	P56928B	<b>\$37.50</b>
Knife Assembly with Shoe & 2 blades, GS Drag	P56518B	<b>\$320.00</b>
Knife Blade, GS Drag	P44985B	<b>\$27.00</b>
Material Roll Holder, Low Friction ( <i>Ships from Plant 0110</i> )	P26381D	<b>\$205.00</b>
Penholder with Black Pen	P66925A	<b>\$54.17</b>
Pen - Ball Point, Black	P32433A	<b>\$12.00</b>
Pen - Ball Point, Blue	P32432A	<b>\$12.00</b>
Pen - Ball Point, Red	P32431A	<b>\$12.00</b>
Registration Eyepiece for use with EDGE Prints	P50136B	<b>\$75.00</b>
Squeegee	P23541C	<b>\$2.00</b>
Theta Knife Lift Washer	P27081B	<b>\$1.00</b>
Tweezers	P25933A	<b>\$7.00</b>
Cable, PC to Plotter - 30 feet	P61415C	<b>\$277.00</b>
Cable, PC to Plotter - 50 feet	P61414C	<b>\$178.00</b>



February 18, 2019  
Page 28

## Gerber **Accessories** – continued

### **GSx™ and GSx *plus*™**

Description	Part Number	Price
Accessory Kit ( <i>Ships from Plant 0110</i> )	P55771C	<b>\$310.00</b>
Knife Assembly with Shoe & 2blades	P56518B	<b>\$320.00</b>
Knife Blade, GS Drag	P44985B	<b>\$27.00</b>
Material Roll Holder, Low Friction	P26381D	<b>\$205.00</b>
Pen - Ball Point, Black	P32433A	<b>\$12.00</b>
Pen - Ball Point, Blue	P32432A	<b>\$12.00</b>
Pen - Ball Point, Red	P32431A	<b>\$12.00</b>
Penholder with Black Pen	P66925A	<b>\$54.17</b>
Squeegee	P23541C	<b>\$2.00</b>
Tweezers	P25933A	<b>\$7.00</b>

### **Monument– GS15 *plus*™ M and GS750 *plus*™ M**

Description	Part Number	Price
Cable, PC to Plotter - 30 feet	P61415C	<b>\$277.00</b>
Cable, PC to Plotter - 50 feet	P61414C	<b>\$178.00</b>
Knife Assembly with Shoe & 2 blades, GS Drag & Select 15™	P56518B	<b>\$320.00</b>
Knife Assembly, HS Swivel	P56530B	<b>\$355.00</b>
Knife Blade, 30° Carbide	P17156B	<b>\$22.00</b>
Knife Blade, 30° Super Sharp	P30033B	<b>\$25.00</b>
Knife Blade, 45° Carbide, for Sandblast Stencil	P33489B	<b>\$25.00</b>
Knife Blade, 60° Carbide, for Sandblast Stencil	P37311B	<b>\$25.00</b>
Knife Blade, GS Drag	P44985B	<b>\$27.00</b>
Knife Blade, HS Swivel	P56928B	<b>\$37.50</b>
Knife Holder with 30° Blade	P56734A	<b>\$70.83</b>
Knife Holder, Adjustable with 60° Blade	P56737A	<b>\$92.71</b>
Material Roll Holder, Low Friction ( <i>Ships from Plant 0110</i> )	P26381D	<b>\$205.00</b>
Pen - Ball Point, Black	P32433A	<b>\$12.00</b>
Pen - Ball Point, Blue	P32432A	<b>\$12.00</b>
Pen - Ball Point, Red	P32431A	<b>\$12.00</b>
Penholder with Black Pen	P66925A	<b>\$54.17</b>
Squeegee	P23541C	<b>\$2.00</b>
Theta Knife Lift Washer	P27081B	<b>\$1.00</b>
Tweezers	P25933A	<b>\$7.00</b>



# Gerber **Legacy Plotter Accessories**

## **Tempo™ 600**

Description	Part Number	Price
Blade holder, 0.9mm, blue top, black ABS tip	P82585A	<b>\$156.00</b>
Cable for Tempo 600, 15ft USB (A to B)	P81931A	<b>\$20.50</b>
Fiber Tip Pen, Black, .3mm	P82582A	<b>\$8.60</b>

## **P2C**

Description	Part Number	Price
Blade - Single 60° P2C (requires 60° holder P78402A)	P78400A	<b>\$31.50</b>
Blades - 5-Pack 60° P2C (requires 60° holder P78402A)	P78398A	<b>\$158.00</b>
Blades 5-Pack 36° P2C	P78397A	<b>\$242.00</b>
Cutting strip P2C 600	P78399A	<b>\$22.00</b>
Sheet off knife P2C 600/1200 sheet-off knife with razor blade	P78405A	<b>\$16.00</b>

## **FasTrack™ and EmbossTrack™**

Description	Part Number	Price
EmbossTrack Pen, Felt Tip Black - Set of 5	P59259A	<b>\$31.50</b>
FasTrack 30° FasTrack Knife Blades, Set of 2	P61638A	<b>\$86.46</b>
FasTrack 45° FasTrack Knife Blades, Set of 2	P61639A	<b>\$86.46</b>
FasTrack Knife Holder NO Depth Indicator	P61637A	<b>\$185.42</b>
FasTrack Pen, Felt Tip Black - Set of 5	P59259A	<b>\$31.50</b>



## Gerber **Legacy Plotter Accessories** – continued

### **Signmaker®/Graphix® Stacking Weight**

Description	Part Number	Price
Knife Blade, 30° Carbide	P17156B	<b>\$22.00</b>
Knife Blade, 30° Super Sharp	P30033B	<b>\$25.00</b>
Knife Blade, 45° Carbide, for Sandblast Stencil	P33489B	<b>\$25.00</b>
Knife Blade, 60° Carbide, for Sandblast Stencil	P37311B	<b>\$25.00</b>
Material Roll Holder, Low Friction	P26381D	<b>\$205.00</b>
Pen Ball Point Medium, Black	P25927A	<b>\$6.50</b>
Penholder with Black Pen	P66925A	<b>\$54.17</b>
Registration Eyepiece - HS/GS and older	P50136B	<b>\$75.00</b>
Squeegee	P23541C	<b>\$2.00</b>
Theta Knife Lift Washer	P27081B	<b>\$1.00</b>
Tweezers	P25933A	<b>\$7.00</b>

### **S/750™, Signmaker®/750, Graphix®/750, GSP® SPRINT™**

Description	Part Number	Price
Penholder with Black Pen	P66925A	<b>\$54.17</b>
Pen Ball Point Medium, Black	P25927A	<b>\$6.50</b>
Theta Knife Lift Washer	P27081B	<b>\$1.00</b>

### **GSP SPRINT IIB™, SuperSprint™, SuperSprint Model B**

Description	Part Number	Price
Cable, PC to Plotter - 30 feet	P61415C	<b>\$277.00</b>
Cable, PC to Plotter - 50 feet	P61414C	<b>\$178.00</b>
Knife Assembly, HS Swivel	P56530B	<b>\$355.00</b>
Knife Blade, 30° Carbide	P17156B	<b>\$22.00</b>
Knife Blade, 30° Super Sharp	P30033B	<b>\$25.00</b>
Knife Blade, 45° Carbide, for Sandblast Stencil	P33489B	<b>\$25.00</b>
Knife Blade, 60° Carbide, for Sandblast Stencil	P37311B	<b>\$25.00</b>
Knife Holder with 30° Blade	P56734A	<b>\$70.83</b>
Knife Holder with Shoe & 2 blades, GS Drag & Select 15	P56518B	<b>\$320.00</b>
Material Roll Holder, Low Friction	P26381D	<b>\$205.00</b>
Pen - Ball Point, Black	P32433A	<b>\$12.00</b>
Pen - Ball Point, Blue	P32432A	<b>\$12.00</b>
Pen - Ball Point, Red	P32431A	<b>\$12.00</b>
Penholder with Black Pen	P66925A	<b>\$54.17</b>
Registration Eyepiece - HS/GS and older	P50136B	<b>\$75.00</b>
Squeegee	P23541C	<b>\$2.00</b>
Tweezers	P25933A	<b>\$7.00</b>



## Gerber **Legacy Plotter Accessories** – continued

### Graphix 2

Description	Part Number	Price
Knife Blade, 30° Carbide	P17156B	<b>\$22.00</b>
Knife Blade, 30° Super Sharp	P30033B	<b>\$25.00</b>
Pen Ball Point Medium, Black	P25927A	<b>\$6.50</b>
Squeegee	P23541C	<b>\$2.00</b>
Tweezers	P25933A	<b>\$7.00</b>

### ODYSSEY and ODYSSEY XP

Description	Part Number	Price
30° Knife Blades, Set of 2	P63681B	<b>\$55.00</b>
45° Knife Blades, Set of 2	P63679B	<b>\$55.00</b>
60° Knife Blades, Set of 2	P63680B	<b>\$55.00</b>
Pounce Mat	P72613A	<b>\$50.00</b>
Pounce Mat & Tool Kit	P76180A	<b>\$212.29</b>
Pounce Tool	P76127B	<b>\$177.95</b>
Registration Eyepiece	P67283B	<b>\$71.00</b>
Swivel Knife Assembly with 45° Blade	P65916B	<b>\$156.25</b>

### Select 15

Description	Part Number	Price
Accessory Kit	P55771C	<b>\$310.00</b>
Knife Assembly with Shoe & 2 blades, GS Drag & Select 15	P56518B	<b>\$320.00</b>
Knife Blade, GS Drag	P44985B	<b>\$27.00</b>
Material Roll Holder, Low Friction ( <i>Ships from Plant 0110</i> )	P26381D	<b>\$205.00</b>
Pen - Ball Point, Black	P32433A	<b>\$12.00</b>
Pen - Ball Point, Blue	P32432A	<b>\$12.00</b>
Pen - Ball Point, Red	P32431A	<b>\$12.00</b>
Penholder with Black Pen	P66925A	<b>\$54.17</b>
Squeegee	P23541C	<b>\$2.00</b>
Tweezers	P25933A	<b>\$7.00</b>

### Signer

Description	Part Number	Price
Knife Blade, 30-Degree	P47281B	<b>\$22.00</b>
Knife Blade, 45-Degree	P47282B	<b>\$27.00</b>
Pen Tool Assembly with pen (throwaway)	P37840C	<b>\$26.00</b>





# Gerber Routing Bits

## Gerber Platinum Specialty Bits

Gerber Platinum Specialty bits take the guesswork out of choosing the correct bit for a specific substrate. Gerber Platinum bit descriptions include an application code which identifies materials and applications for which the bit is most suited. The application code is etched into the shank of the bit, along with the part number, for easy identification once the bit has been removed from its sleeve.

Application Reference Chart for Gerber Platinum bits		
AW	Aluminum & Wood	<b>1-Flute Upcut O Flute</b> for Alucobond®, Diond®, Dilite®, Hardwood, Softwood, Non-Ferrous Metals (Aluminum, Brass, Copper)
GP	General Purpose	<b>1-Flute Upcut Super O Flute</b> for Hard and Soft Plastic, Hard and Soft Woods, Wood and Plastic Composites.
HPF	Hard Plastic & Foam	<b>1-Flute Upcut O Flute</b> for Solid Surface (Avonite™, Corian®), Cast Acrylic
SPF	Soft Plastic & Foam	<b>1-Flute Upcut O Flute</b> for PVC Foam (Celtec®, Trovicel®, Sintra®, Kometex®), HDU (Signfoam®, Precision Board™), Extruded Acrylic, Styrene, Polycarbonate (Lexan), HDPE (Polycarve™)
LV	Laminates and Veneers	Produces clean top and bottom edges on single and double-sided laminated substrates. For Hardwood, Softwood, Wood Composites (MDO, MDF, Plywood, Particle board) See footnotes for more information.
APS	All Purpose Straight	<b>1-Flute Straight</b> for Substrates with thin laminates, foam boards (clay coated paper and styrene surfaces; Fome-Cor®, Gatorfoam®, Gatorplast® )
F	Foams (Special Long)	<b>2-Flute Upcut</b> Specially designed for thick foams and soft plastics from 1-1/4" to 2-1/4". HDU (Precision Board™, Signfoam®)
APC	All Purpose Cleanout	<b>2-Flute Upcut Bottom Surfacing</b> Produces a clean bottom finish with a .002" radius inside bottom edge. HDPE (Polycarve™), Aluminum, Woods, Solid Surface
FT	Folding Tool	<b>2-Flute Straight V Flute V Bottom</b> Carbide tipped specialty bit designed for folding Alucobond®, Diond®, Dilite® up to 90-degrees.
3DM	3D Modeling	<b>2-Flute Upcut Ballnose</b> for three-dimensional modeling. Advanced grind technology produces a superior cut in plastics, woods composites and aluminum.

Application Code	Shank Diameter	Cutting Diameter	Cutting Edge Length	Overall Length	Part Number	Price
Gerber Platinum AW	1/8"	1/16"	1/4"	1-1/2"	P79820A	\$26.93
Gerber Platinum AW	1/8"	1/8"	1/4"	1-1/2"	P79821A	\$28.08
Gerber Platinum AW	1/4"	3/16"	3/8"	2"	P79822A	\$34.96
Gerber Platinum AW	1/4"	1/4"	3/8"	2"	P79823A	\$34.96
Gerber Platinum AW	1/4"	1/4"	3/4"	2-1/2"	P79824A	\$37.81
Gerber Platinum AW	3/8"	3/8"	3/4"	3"	P80307A	\$64.75
Gerber Platinum GP	1/4"	1/8"	1/2"	2"	P79825A	\$34.38
Gerber Platinum GP	1/4"	3/16"	5/8"	2"	P79826A	\$37.08
Gerber Platinum GP	1/4"	3/16"	1-1/4"	3"	P79827A	\$42.97
Gerber Platinum GP	1/4"	1/4"	5/8"	2"	P79828A	\$34.38
Gerber Platinum GP	1/4"	1/4"	7/8"	2-1/2"	P79829A	\$49.85
Gerber Platinum GP	1/4"	1/4"	1-1/2"	3"	P79830A	\$65.32
Gerber Platinum GP	1/4"	1/8"	1-1/8"	2-1/2"	P80300A	\$61.88
Gerber Platinum GP	1/8"	1/16"	1/4"	2"	P80356A	\$33.80
Gerber Platinum GP	3/8"	3/8"	1-1/8"	3"	P80301A	\$85.95
Gerber Platinum HPF	1/4"	1/16"	1/4"	2"	P80340A	\$26.65
Gerber Platinum HPF	1/4"	1/8"	1/2"	2"	P80341A	\$26.65
Gerber Platinum HPF	1/4"	3/16"	5/8"	2"	P80342A	\$26.65
Gerber Platinum HPF	1/4"	1/4"	3/4"	2-1/2"	P80343A	\$26.65
Gerber Platinum HPF	1/4"	1/8"	1/4"	2"	P80344A	\$26.65
Gerber Platinum HPF	1/4"	3/16"	3/8"	2"	P80345A	\$26.65
Gerber Platinum HPF	1/4"	1/4"	1/2"	2"	P80346A	\$27.50
Gerber Platinum HPF	1/4"	1/8"	1-1/8"	2-1/2"	P80348A	\$49.27
Gerber Platinum HPF	1/4"	3/16"	1-1/8"	2-1/2"	P80347A	\$49.27
Gerber Platinum HPF	1/4"	1/4"	1-1/2"	3"	P80370A	\$33.80



February 18, 2019  
Page 33

## Gerber **Routing Bits** – continued

Application Code	Shank Diameter	Cutting Diameter	Cutting Edge Length	Overall Length	Part Number	Price
Gerber Platinum SPF	1/4"	1/8"	1/4"	2"	P80363A	\$26.93
Gerber Platinum SPF	1/4"	1/4"	3/4"	2-1/2"	P80364A	\$26.93
Gerber Platinum SPF	1/4"	3/16"	3/8"	2"	P80362A	\$26.93
Gerber Platinum SPF	1/4"	3/16"	5/8"	2"	P80365A	\$26.93
Gerber Platinum SPF	1/4"	1/8"	1/2"	2"	P80366A	\$26.93
Gerber Platinum SPF	1/4"	1/16"	1/4"	2"	P80367A	\$26.93
Gerber Platinum SPF	1/4"	1/4"	1-1/2"	3"	P80368A	\$33.80
Gerber Platinum LV <sup>1</sup>	1/4"	1/8"	3/8"	2-1/2"	P80302A	\$53.29
Gerber Platinum LV <sup>1</sup>	1/4"	3/16"	5/8"	2-1/2"	P80303A	\$57.30
Gerber Platinum LV <sup>2</sup>	1/4"	1/4"	7/8"	2-1/2"	P80304A	\$71.63
Gerber Platinum LV <sup>2</sup>	3/8"	3/8"	7/8"	3"	P80305A	\$63.03
Gerber Platinum LV <sup>2</sup>	3/8"	3/8"	1-1/8"	3"	P80306A	\$76.49
Gerber Platinum LV <sup>3</sup>	1/4"	1/4"	1/2"	2"	P72975B	\$54.50
Gerber Platinum LV <sup>3</sup>	1/8"	1/8"	1/2"	2-1/2"	P72976B	\$25.79
Gerber Platinum LV <sup>3</sup>	1/4"	1/4"	3/4"	2-1/2"	P72977B	\$35.18
Gerber Platinum LV <sup>4</sup>	1/8"	1/8"	3/4"	2"	P73832B	\$36.23
Gerber Platinum LV <sup>5</sup>	3/16"	3/16"	3/4"	2-1/2"	P74596B	\$36.23
Gerber Platinum APS	1/4"	1/8"	1/2"	2"	P80336A	\$33.80
Gerber Platinum APS	1/4"	3/16"	5/8"	2"	P80337A	\$33.80
Gerber Platinum APS	1/4"	1/4"	3/4"	2-1/2"	P80338A	\$33.80
Gerber Platinum APS	1/4"	1/4"	1-1/4"	4"	P80339A	\$40.11
Gerber Platinum F	1/4"	1/4"	1-1/4"	3"	P80349A	\$53.86
Gerber Platinum F	1/4"	1/4"	2-1/4"	4"	P80350A	\$87.67
Gerber Platinum F	3/8"	3/8"	1-1/2"	4"	P80351A	\$87.67
Gerber Platinum F <sup>6</sup>	1/4"	1/4"	2-1/4"	3-1/2"	P80160B	\$143.25
Gerber Platinum APC	1/8"	1/8"	1/4"	2"	P80358A	\$25.21
Gerber Platinum APC	1/4"	1/4"	3/8"	2"	P80359A	\$35.52
Gerber Platinum APC	3/8"	3/8"	5/8"	2-1/2"	P80360A	\$52.72
Gerber Platinum FT	1/4"	1/2"	3/8"	2"	P80361A	\$87.67
Gerber Platinum 3DM	1/8"	1/8"	1/2"	2"	P80352A	\$38.39
Gerber Platinum 3DM	1/4"	3/16"	3/4"	2"	P80353A	\$38.39
Gerber Platinum 3DM	3/8"	3/8"	1-1/8"	3"	P80355A	\$60.17

1. 1-Flute Compression
2. 2-Flute Compression
3. 2-Flute Straight (There is no Application Code on the shaft of this bit.)
4. 1-Flute Radial (There is no Application Code on the shaft of this bit.)
5. Spiral (There is no Application Code on the shaft of this bit.)
6. Diamond Cut



February 18, 2019  
Page 34

# Gerber **Routing Bits** – continued

## Gerber Gold™ Routing Bits

Gerber Gold routing bits are designed for greater performance and longer tool life. These remarkable routing bits are made from the highest quality micrograin carbide to the tightest tolerances in the industry. They are then coated with titanium nitride to enhance their durability even further. The result is superior edge quality and lower tooling cost. These high performance bits can be used with all Gerber routers/engravers, as well as with other automated and manual routers.

### Two-Flute Spiral Bits

These are the most versatile type of bits and are used for general routing of the following materials:

- Harder Materials: Such as plate aluminum, brass, bronze, copper; cast acrylics, solid surface materials, particle board, plywood, and hardwoods.
- Softer Materials: Such as foam boards, engraving stock, PVC (Sintra®, Komatex, Trovicel®, Celtec, etc.) soft plastics, soft woods, and similar density materials.

These bits provide excellent chip removal from the cut because of the upward spiral action. They also assure excellent edge quality on these materials.

Shank Diameter	Cutting Diameter	Cutting Edge Length	Overall Length	Part Number	Price
1/8"	1/16"	3/16"	1-1/2"	P50521B	<b>\$15.93</b>
1/8"	1/8"	1/4"	1-1/2"	P50525B	<b>\$15.93</b>
1/8"	1/8"	1/2"	1-1/2"	P50522B	<b>\$19.62</b>
1/4"	3/16"	3/8"	2"	P50526B	<b>\$36.79</b>
1/4"	3/16"	5/8"	2"	P50523B	<b>\$33.72</b>
1/4"	3/16"	1-1/8"	3"	P50528B	<b>\$42.92</b>
1/4"	1/4"	1/2"	2"	P50527B	<b>\$29.19</b>
1/4"	1/4"	3/4"	2-1/2"	P50524B	<b>\$30.66</b>
1/4"	1/4"	1-1/2"	3"	P50529B	<b>\$49.05</b>
1/4"	1/4"	2-1/4"	3-3/4"	P50530B	<b>\$67.44</b>
1/8"	1/8"	1-1/4"	3"	P52819B	<b>\$41.80</b>

### Single-Flute Radial Bits

These bits are ideal for cutting sheet aluminum and brass with a thickness of .060" (1.5mm) and less, as well as soft woods and soft alloy aluminum. Unlike the spiral flute bits, these bits have a single straight cutting edge which doesn't pull up on the work piece. This straight flute allows the bit to "shear" the chip off at the top edge of the material being cut without leaving a burr. The chip extraction, however, will not be as good as with a spiral bit.

Shank Diameter	Cutting Diameter	Cutting Edge Length	Overall Length	Part Number	Price
1/4"	3/16"	5/8"	2"	P50533B	<b>\$38.47</b>
1/4"	1/4"	3/4"	2-1/2"	P50534B	<b>\$39.96</b>
1/4"	1/4"	1-1/2"	3-1/2"	P50535B	<b>\$57.71</b>

### Three-Flute Spiral Tapered Bits

For use on all materials listed for two-flute spiral bits. Tapered bits produce an angle on the edge of the material being cut. As a result, these bits are excellent for cutting vacuum form molds. These bits can also be used to create a "halo" effect without incurring additional cost when other than a straight edge is desired for special applications,

Shank Diameter	Cutting Diameter	Cutting Edge Length	Overall Length	Angle	Part Number	Price
1/4"	1/8"	1"	2-1/4"	7°	P50643B	<b>\$53.95</b>
1/4"	1/8"	1/2"	1-7/8"	3°	P50531B	<b>\$58.90</b>



February 18, 2019  
Page 35

## Gerber **Routing Bits** – continued

### **Auto-Carve™ 3D Carving Bits**

Gerber V-cutting carbide bits deliver superb cut quality, maximum cutting efficiency, and the longest possible tool life. These specifically designed tools are produced within extremely tight manufacturing tolerances, ensuring the level of accuracy essential to the automated carving process.

Design considerations that impact tool selection:

For Small, Intricate Graphics with Thin Stroke Widths: Choose a tool with a steep angle, such as the 90° tool.

For Large Graphics with Wide Stroke Widths: Choose a tool with a shallower angle, such as the 150° tool.

Shank Diameter	Tool Diameter	Tool Degree	Part Number	Price
1/4"	1 1/4"	90°	P56371A	<b>\$110.89</b>
1/4"	1 1/4"	100°	P56372A	<b>\$117.07</b>
1/4"	1 1/4"	110°	P56373A	<b>\$120.75</b>
1/4"	1 1/4"	120°	P56374A	<b>\$135.55</b>
1/4"	1 1/4"	130°	P56375A	<b>\$104.75</b>
1/4"	1 1/4"	140°	P56376A	<b>\$104.75</b>
1/4"	1 1/4"	150°	P56377A	<b>\$110.89</b>

### **Gerber Engraving Bits**

Gerber also offers high quality, long and short type industry standard engraving bits. Designed to give excellent results with Gerber equipment, they also work with other routers/engravers. Gerber engraving bits are ideal for applications using Dimension Plus®, ROWMARK®, acrylic, polycarbonate, and other plastic materials.

#### **Engraving Bits (Long Type)**

These bits are for top-loading engraving spindles. Use with Gerber Engraver Options.

Shank Diameter	Cutting Diameter	Part Number	Price
1/4"	.010"	P47767A	<b>\$37.21</b>
1/4"	.060"	P47775A	<b>\$37.21</b>

#### **Engraving Bits (Short Type)**

These bits are for bottom-loading collet systems. Use with Router Motor or High Frequency Spindle Option.

Shank Diameter	Cutting Diameter	Part Number	Price
1/4"	.010"	P50536A	<b>\$28.06</b>
1/4"	.020"	P50537A	<b>\$28.06</b>
1/4"	.030"	P50538A	<b>\$27.48</b>
1/4"	.060"	P50539A	<b>\$27.48</b>
1/4"	.090"	P50540A	<b>\$27.48</b>



# Gerber **Routing Bits** – continued

## Other Gerber Specialty Bits

### Braille / Tactile Bits

These bits are used to create ADA (Americans with Disabilities Act) compliant signs. All have shank diameters of 1/4" (6.0mm).

- The Long Type for use with Dimension 200®, ADVANTAGE Router™ 600 and Sabre™ Engraver Options.
- The Short Type has the same tip geometry as the Long Type, but is cut shorter for use in a Router Motor or High Frequency Spindle Option.

Description	Use	Part Number Long Type	Price	Part Number Short Type	Price
Braille Cutter	For cutting Braille dots	P47763A	<b>\$61.82</b>	P47849A	<b>\$45.80</b>
.015" Profile Cutter	For cutting ADA sign borders and surface-mounted text	P50624A	<b>\$48.09</b>	P50622A	<b>\$34.35</b>
.060" Parallel Cutter	For cutting both letter clean-out pockets in the sign face and matching male characters for Auto-Inlay™ method)	P50623A	<b>\$44.65</b>	P50625A	<b>\$30.35</b>

### Table Surfacing Bits

For use with a Router Motor or High Frequency Spindle to mill the sacrificial table surface perfectly flat in respect to the Z axis and aid in precise depth control when cutting.

Description	Part Number	Price
1/4" shank diameter for AR600 or Sabre	P52617A	<b>\$80.54</b>
1/2" shank diameter for AR600 or Sabre	P56327A	<b>\$62.51</b>
1/4" shank diameter for Dimension 200	P50569A	<b>\$34.86</b>





# Gerber **Router Accessories**

## D200(X) Spindle Option Accessories

Description	Part Number	Price
Collet 1/4"-1.3hp Perske	P50214A	<b>\$289.00</b>
Tool Wrench Spndl-1.3hp Perske	P50219A	<b>\$20.00</b>
Tool Wrench Spnrr-1.3hp Perske	P50220A	<b>\$42.00</b>
Collet 1/4" with Nut - Porter Cable Motor	P48679A	<b>\$31.50</b>
Collet Sleeve, .125 inch	P75886B	<b>\$12.00</b>
De-Burring Tool	P50551A	<b>\$28.50</b>

## D200 Accessories

Description	Part Number	Price
Ball Point Pen - Red Fine	P32431A	<b>\$12.00</b>
Ball Point Pen Black Fine	P32433A	<b>\$12.00</b>
Ball Point Pen-Blue Fine	P32432A	<b>\$12.00</b>
Collet 1/2" W/Nut- Porter Cable Motor	P48680A	<b>\$17.00</b>
Collet 1/4" W/Nut- Porter Cable Motor	P48679A	<b>\$31.50</b>
Collet Sleeve, .125 inch	P75886B	<b>\$12.00</b>
De-Burring Tool	P50551A	<b>\$28.50</b>
Pen Assembly	P75044B	<b>\$75.00</b>
Swivel Knife Assembly, .500 inch Dia. Shank	P42255A	<b>\$506.00</b>
Swivel Knife Blade Replacement	P42254A	<b>\$83.00</b>
Tool Height Gage, Sabre - Scratch Plate	P62836B	<b>\$18.49</b>
Tool Wrench 5mm Allen T-Handle	P50550A	<b>\$11.00</b>

## Sabre Standard Accessories

Description	Part Number	Price
Collet Sleeve, .125 inch	P75886B	<b>\$12.00</b>
Collet, .250 inch (Porter Cable Motor)	P48679A	<b>\$31.50</b>
Collet, .500 inch (Porter Cable Motor)	P48680A	<b>\$17.00</b>
De-Burring Tool	P50551A	<b>\$28.50</b>
Trim Mist – Mist coolant fluid for the Sabre – one gallon	P50552A	<b>\$42.00</b>
Pen - Ball Point, Black	P32433A	<b>\$12.00</b>
Pen - Ball Point, Blue	P32432A	<b>\$12.00</b>
Pen - Ball Point, Red	P32431A	<b>\$12.00</b>
Pen Assembly	P75044B	<b>\$75.00</b>
Swivel Knife Assembly, .500 inch Dia. Shank	P42255A	<b>\$506.00</b>
Swivel Knife Blade Replacement	P42254A	<b>\$83.00</b>
Tool Height Gage, Sabre - Scratch Plate	P62836B	<b>\$18.49</b>
Work Clamp Knob, Sabre	P62041B	<b>\$13.63</b>
Work Clamp T-Nut, Sabre	P62510B	<b>\$16.50</b>
Work Clamp, Sabre	P62039B	<b>\$10.51</b>



## Gerber **Router Accessories** – continued

### Engraver, Porter-Cable and Perske Motor and Accessories

Description		Part Number	Price
Engraver Option	Brush, Cleaning - Engraver	P26492A	\$6.27
	Active Pressure Foot Cap	P47566B	\$5.00
	Active Pressure Foot	P47567B	\$3.15
	Spline Driver, .069 inch	P26452A	\$11.25
	Spline Wrench Handle	P26451A	\$8.50
Perske 7 HP High Frequency Spindle and Porter Cable Motor	Collet, .250 inch (Perske Motor)	P52549A	\$160.00
	Collet, .500 inch (Perske Motor)	P52550A	\$48.00
	Nut, M27	P52548A	\$160.00
	Wrench Spanner, 24 mm	P52547A	\$42.00
	Wrench, 24 mm	P52546A	\$44.00
	COLLET ¼" w/NUT-PRTR CBL	P48679A	\$31.50
	COLLET ½" w/NUT-PRTR CBL	P48680A	\$17.00
	.125 DIA BRASS insert	P75886B	\$12.00

### Sabre ATC Accessories

Description	Part Number	Price
Collet .125" (3mm) ATC only!	P78168A	\$52.00
Collet .250" (6mm) ATC only!	P78167A	\$52.00
Collet .500" (12mm) ATC only!	P78169A	\$52.00

---

## Gerber **Router Materials**

Description	Part Number	Price
Double-sided router tape 1" x 60 yards	P71165A	\$63.72
Double-sided router tape 2" x 60 yards	P71166A	\$118.00
Double-sided router tape 6" x 36 yards	P59655A	\$189.00



February 18, 2019  
Page 39

# 7-1/2" Materials

Material for Gerber Signer, LetterSmith and LC-7 plotters  
See page 30 for Accessories for Small Format Plotters

## Gerber 220 High Performance Film manufactured by 3M

220 High Performance		7.5" Punched	
Color, Color Code		25 Yard	
		<b>\$141.42</b>	
Black	220-12		P34843A
Matte Black	220-22		P34841A
Matte White	220-20		P83227A
White	220-10		P83245A
Color, Color Code		25 Yard	
		<b>\$153.49</b>	
Cardinal Red	220-53		P44284A
Intense Blue	220-47		P44282A

High performance 2 mil cast vinyl specifically developed for optimal cutting, weeding, and application. Clear pressure-sensitive adhesive allows production of attractive two-way markings. Excellent durability with five to eight-year exterior life.

[Gerber 220 Product Bulletin](#)

## Gerber 280 Reflective Sheeting manufactured by 3M

280 Reflective		7.5" Punched	
Color, Color Code		10 Yard	
		<b>\$162.50</b>	
Black	280-85	P37352A	
White	280-10	P37353A	

Series 280 7.5 mil reflective sheeting is designed for markings requiring high visibility, both day and night. The material has good flexibility and provides excellent conformance to flat or moderately curved substrates. Seven-year exterior life on all colors; five-year exterior life on black.

[Gerber 280 Product Bulletin](#)

enVision is a trademark of 3M Company that is licensed to Gerber.



February 18, 2019  
Page 40

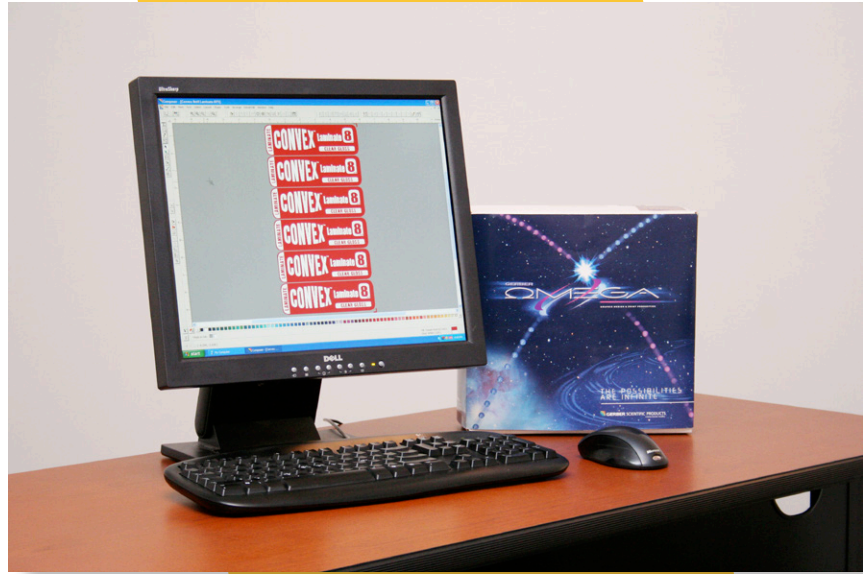
# ACCESSORIES & EQUIPMENT

## DESIGN

### OMEGA 6.5 Design Software

Gerber Omega software is a full design suite that has evolved over the past two decades into a program that literally allows you to produce graphics that others can't. The latest version adds several capabilities that have been asked for over the past few years such as find my font and consecutive numbering. Omega 6.5 is a culmination of decades of suggestions from users like you.

Omega is an intuitive, versatile, powerhouse that has the capability to enable a beginner and propel the expert.



## PRINT – COLOR

### GMS Alignment Frame with Heavy Duty Rewinders

**Experience truly unattended printing.**

When your GERBER EDGE begins printing, the GMS Heavy-Duty Electric Rewinders keep constant tension on your materials while rewinding when the EDGE feeds left or right. This prevents your materials from touching the table surface or creating folds. Using a rewinder on each side of the printer eliminates the need for constant attention and frees up your time to accomplish more.







Order Online with us at  
[www.ShopGMS.com](http://www.ShopGMS.com)

Call to consult with us about our materials

Local: 847.582.9276

Toll Free: 800.232.8018

Learn more at:  
[www.GerberPrinters.com](http://www.GerberPrinters.com)

28457 N. Ballard Dr.  
Suite A1  
Lake Forest, IL 60045

